

# Studded Power Feed Thru Terminal Blocks

## ST722E Series (end mount)

### Specifications:

#### Electrical:

- 300 Volts AC/DC (UL 1059 Class B and C)
- 175 Amps
- Wire Range 2/0 - #8
- Accommodates Two Hole Compression Lugs on .625" Centers – wires #2 and larger may require narrow lugs

#### General/Mechanical:

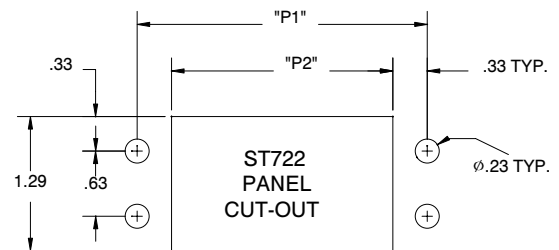
- Base, Thermoplastic, 125°C (UL RTI)
- Studs, Brass, Nickel Plated
- 1 - 6 Poles
- .73" Centers
- Application Torque: 35 lbf-in for #10 - 32 and M5, 50 lbf-in for 1/4" - 20 and M6
- UL Recognized File No. XCFR2.E62806
- CSA Certified File No. LR19766
- CE
- RoHS Compliant



ST722E2503

LENGTH	"P1"	"P2"
1-LINE	1.32	.66
2-LINE	2.05	1.39
3-LINE	2.78	2.12
4-LINE	3.51	2.85
5-LINE	4.24	3.58
6-LINE	4.97	4.31

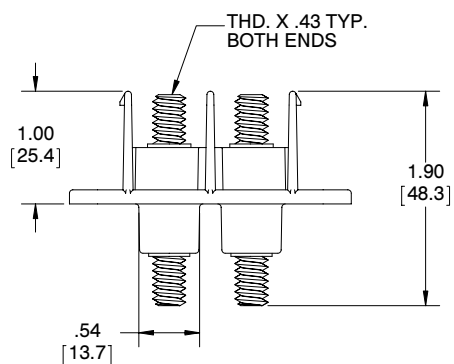
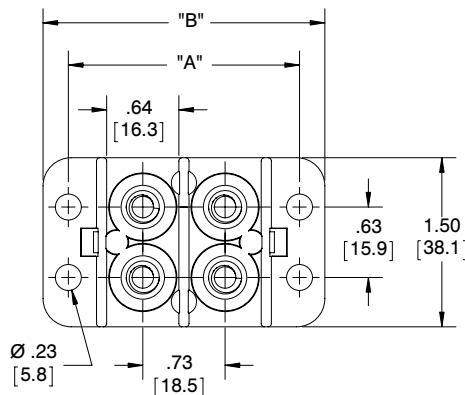
Catalog Number	Number of Poles	Dimensions A		Dimensions B	
		Inches	Metric	Inches	Metric
ST722EXX01	1	1.32	(33.53)	1.77	(44.96)
ST722EXX02	2	2.05	(52.07)	2.50	(63.50)
ST722EXX03	3	2.78	(70.61)	3.23	(82.40)
ST722EXX04	4	3.51	(89.15)	3.96	(100.58)
ST722EXX05	5	4.24	(107.70)	4.69	(119.13)
ST722EXX06	6	4.97	(126.24)	5.42	(137.67)



Replace XX with thread size:  
 19 - #10-32 Stud  
 25 - 1/4" - 20 Stud  
 M5 - M5 Stud  
 M6 - M6 Stud

Hardware Options:  
 (blank) – No hardware  
 UH – All nuts shipped bulk  
 AH – All nuts assembled  
 DL – Assembled barrier side,  
 remainder shipped bulk

See page 60 for available covers



For electronic drawings or 2D/3D CAD data, send request to [drawings@marathonsp.com](mailto:drawings@marathonsp.com)

# Studded Power Feed Thru Terminal Blocks

## ST722 Series

The Studded Power Feed Thru Terminal Blocks were designed for applications where power feed thru is necessary using standard double hole lugs with .625" spacing.

These terminal blocks are available in three mounting options (end mount, back mount, and slide-in mount). They are also offered in various line lengths and with various hardware options (See Hardware Descriptions Below).

These terminal blocks lower cost by eliminating multiple components and assembly time. The terminal blocks are manufactured from top quality insulator and conductor materials. They are designed with a robust one-piece insulator base using a one-piece conductor permanently assembled together.

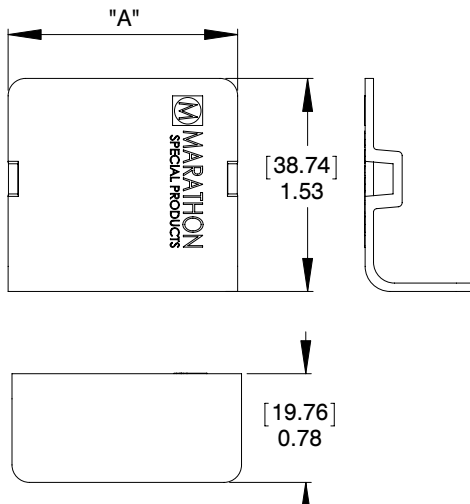
Covers are molded using a one-piece design and are available as an option for all three series of these blocks.

Series	Mounting	Stud (Thread Size)		Poles		Hardware	
ST722	B	2	5	0	2		
	B – Back Mount S – Slide Mount E – End Mount	19 - #10-32 Stud 25 - 1/4" - 20 Stud M5 - M5 Stud M6 - M6 Stud		(Back Mount) 02 – 06 (Slide Mount) 01 – 04 (End Mount) 01 – 06		(blank) – No hardware UH – All nuts shipped bulk AH – All nuts assembled DL – Assembled barrier side, remainder shipped bulk	

### Optional Cover Available:

- Cover is offered in 1 – 6 poles
- One cover accommodates all series
- Base, Thermoplastic
- Flammability UL 94 V-0

Catalog Number	Number of Poles	Dimensions A	
		Inches	Metric
C72201	1	0.91	(23.11)
C72202	2	1.64	(41.66)
C72203	3	2.37	(60.20)
C72204	4	3.10	(78.74)
C72205	5	3.83	(97.28)
C72206	6	4.56	(115.82)



For electronic drawings or 2D/3D CAD data, send request to [drawings@marathonsp.com](mailto:drawings@marathonsp.com)