

# Single Row Terminal Blocks


## Kulka® 1690 GP Series

300 Volts AC/DC (Class B)  
150 Volts AC/DC (Class C)



Top to bottom: 1694 GP 04 PSB, 1691 GP 06 PSB

### Specifications:

- Base, Phenolic, 150°C (UL RTI)
- Screws, #6-32 Binder Head, Phil-Slot, Brass
- Terminals, Plated Brass
- Two speed-nuts supplied per part
- 7/16" Centers
- Wire Range #14 Max. - 20 Amps
- UL Recognized File No. XCFR2.E47811
- CSA Certified File No. LR19766
- 
- RoHS Compliant

### TERMINAL BLOCK SERIES

| # of poles | 1691 GP<br>1692 GP<br>1693 GP |       | 1694 GP<br>1695 GP<br>1696 GP |       | 1697 GP<br>1698 GP<br>1699 GP |      |
|------------|-------------------------------|-------|-------------------------------|-------|-------------------------------|------|
|            | A                             | B     | A                             | B     | A                             | B    |
| 1          | 0.34                          | --    | 1.22                          | 0.88  | 0.53                          | --   |
| 2          | 0.78                          | 0.44  | 1.66                          | 1.31  | 0.97                          | 0.44 |
| 3          | 1.22                          | 0.88  | 2.09                          | 1.75  | 1.41                          | 0.88 |
| 4          | 1.66                          | 1.31  | 2.53                          | 2.19  | 1.84                          | 1.31 |
| 5          | 2.09                          | 1.75  | 2.97                          | 2.63  | 2.28                          | 1.75 |
| 6          | 2.53                          | 2.19  | 3.41                          | 3.06  | 2.72                          | 2.19 |
| 7          | 2.97                          | 2.63  | 3.84                          | 3.50  | 3.16                          | 2.63 |
| 8          | 3.41                          | 3.06  | 4.28                          | 3.94  | 3.59                          | 3.06 |
| 9          | 3.84                          | 3.50  | 4.72                          | 4.38  | 4.03                          | 3.50 |
| 10         | 4.28                          | 3.94  | 5.16                          | 4.81  | 4.47                          | 3.94 |
| 11         | 4.72                          | 4.38  | 5.59                          | 5.25  | 4.91                          | 4.38 |
| 12         | 5.16                          | 4.81  | 6.03                          | 5.69  | 5.34                          | 4.81 |
| 13         | 5.59                          | 5.25  | 6.47                          | 6.13  | 5.78                          | 5.25 |
| 14         | 6.03                          | 5.69  | 6.91                          | 6.56  | 6.22                          | 5.69 |
| 15         | 6.47                          | 6.13  | 7.34                          | 7.00  | 6.66                          | 6.13 |
| 16         | 6.91                          | 6.56  | 7.78                          | 7.44  | 7.09                          | 6.56 |
| 17         | 7.34                          | 7.00  | 8.22                          | 7.88  | 7.53                          | 7.00 |
| 18         | 7.78                          | 7.44  | 8.66                          | 8.31  | 7.97                          | 7.44 |
| 19         | 8.22                          | 7.88  | 9.09                          | 8.75  | 8.41                          | 7.88 |
| 20         | 8.66                          | 8.31  | 9.53                          | 9.19  | 8.84                          | 8.31 |
| 21         | 9.09                          | 8.75  | 9.97                          | 9.63  | 9.28                          | 8.75 |
| 22         | 9.53                          | 9.19  | 10.41                         | 10.06 | 9.72                          | 9.19 |
| 23         | 9.97                          | 9.63  | 10.84                         | 10.50 | 10.16                         | 9.63 |
| 24         | 10.41                         | 10.06 | --                            | --    | --                            | --   |
| 25         | 10.84                         | 10.50 | --                            | --    | --                            | --   |

mm = dim X 25.4

Include "PSB" after part # when ordering (169X GP XX PSB)

See page 100 for 1690 Series Terminal block dimensions.

### Hardware Options:

(Hardware options may affect ratings - consult Customer Service)

| CATALOG #<br>MSP KULKA | PRODUCT<br>DESCRIPTION        | PAGE<br>REFERENCE |
|------------------------|-------------------------------|-------------------|
| KT46                   | Full Quick Connect (0° Flat)  | See page 104      |
| KT47                   | Full Quick Connect (45° Bend) | See page 104      |
| KT48                   | Full Quick Connect (90° Bend) | See page 104      |
| KT52                   | Half Quick Connect (0° Flat)  | See page 104      |
| KT53                   | Half Quick Connect (45° Bend) | See page 104      |
| KT54                   | Half Quick Connect (90° Bend) | See page 104      |
| 3/4 ST                 | Half Solder                   | See page 106      |
| J 601                  | Line to Line Jumper           | See page 107      |
| 601 RJ(S)              | Multiple Position Jumper      | See page 107      |

Quick Connects: .032" x .250"

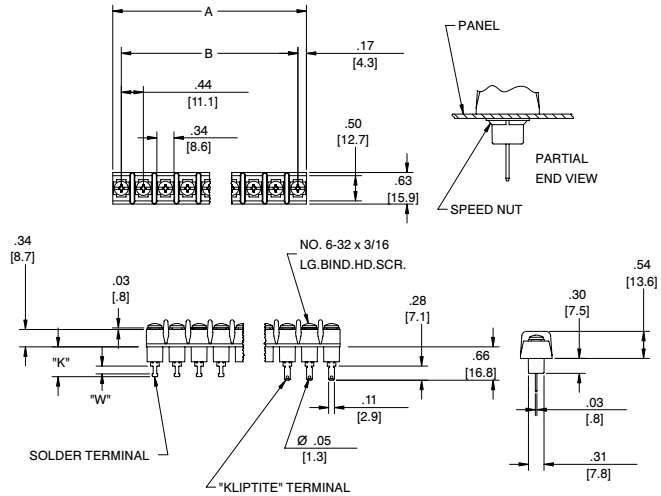
See pages 104-115 for terminal block accessories

# Single Row Terminal Blocks

## Kulka® 1690 GP Series (cont.)

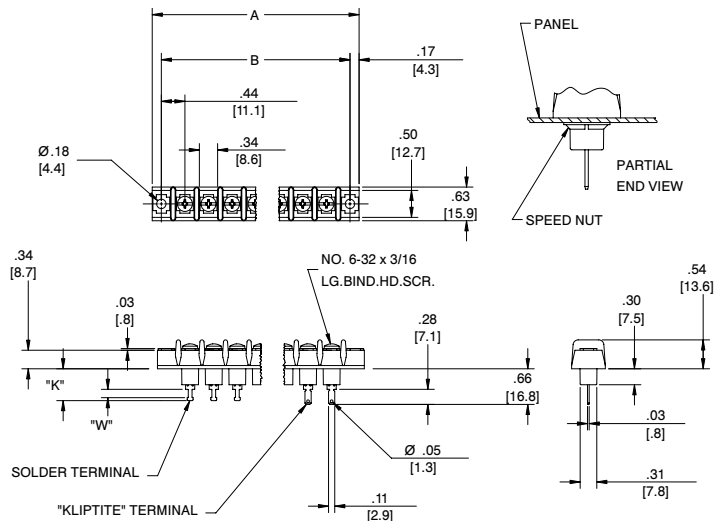
### TERMINAL BLOCK SERIES 1691 GP / 1692 GP / 1693 GP

- 1691 GP Series** Solder terminal  
K = .52 [13.10]; W = .06 [1.59]
- 1692 GP Series** Kliptite terminal
- 1693 GP Series** Solder terminal  
K = .58 [14.68]; W = .13 [3.18]



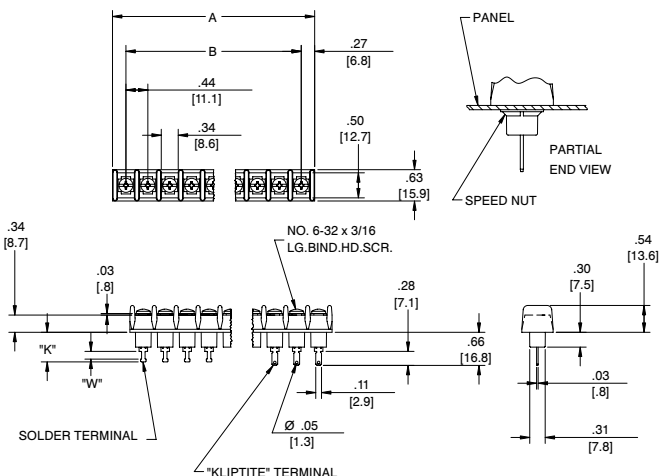
### TERMINAL BLOCK SERIES 1694 GP / 1695 GP / 1696 GP

- 1694 GP Series** Solder terminal  
K = .52 [13.10]; W = .06 [1.59]
- 1695 GP Series** Kliptite terminal
- 1696 GP Series** Solder terminal  
K = .58 [14.68]; W = .13 [3.18]



### TERMINAL BLOCK SERIES 1697 GP / 1698 GP / 1699 GP

- 1697 GP Series** Solder terminal  
K = .52 [13.10]; W = .06 [1.59]
- 1698 GP Series** Kliptite terminal
- 1699 GP Series** Solder terminal  
K = .58 [14.68]; W = .13 [3.18]



For electronic drawings or 2D/3D CAD data,  
send request to [drawings@marathonsp.com](mailto:drawings@marathonsp.com)