

Single Row Terminal Blocks

General Information:

Single Row Terminal Blocks are available in four basic line to line molding sizes. Some are available in either open or feed thru/printed circuit designs. The basic material is phenolic. Modifications are also provided on most terminal blocks, including marking strips.

Ratings and Standards:

The voltage ratings of terminal blocks are based upon the minimum spacing between electrically conductive parts line to line through air and over surface and line to ground through air and over surface.

Class A

Service equipment including deadfront switchboards, panel boards, service entrance devices.

Class B

Commercial appliances including business equipment, electronic data processing equipment and the like.

Class C

Industrial, general

Ratings based on UL 1059 may be higher in some cases depending on application.

Spacing Requirements (in inches):

	Voltage	Thru Air	Over Surface
Class A	51-150	0.500	0.750
	151-300	0.750	1.250
	301-600	1.000	2.000
Class B	51-150	0.063	0.063
	151-300	0.094	0.094
	301-600	0.375	0.500
Class C	51-150	0.125	0.250
	151-300	0.250	0.375
	301-600	0.375	0.500

Reference Chart:

Series	Catalog Page	Amps	Voltage Rating		Base Material	Max Wire Size	Screw Size	Inches L to L	# of Lines	Features
			Class B	Class C						
411	95	5	300	N/A	Phenolic	#18	2-56	.250	1-23	Open Back
599*	96	15	300	150	Phenolic	#16	5-40	.375	1-30	Open Back
799*	96	15	300	150	Phenolic	#16	5-40	.375	1-30	Open Back
699*	97	20	N/A	150	Phenolic	#14	6-32	.437	1-23	Open Back
899*	97	20	600	600	Phenolic	#14	6-32	.437	1-23	Open Back
812*	98	30	N/A	150	Phenolic	#12	8-32	.562	1-18	Open Back
912*	98	30	N/A	300	Phenolic	#12	8-32	.562	1-18	Open Back
1690	99-100	20	300	150	Phenolic	#14	6-32	.437	1-25	Feed Thru
2590	101	15	300	150	Phenolic	#16	6-32	.375	1-25	Printed Circuit
2690	102-103	20	300	150	Phenolic	#14	6-32/8-32	.437	1-25	Printed Circuit

*Open back terminal blocks require an insulator strip to achieve voltage rating.

Single Row Terminal Blocks

Kulka® 411 GP Series

300 Volts AC/DC (Class B)



411 GP 06 PSB

Specifications:

- Base, Phenolic, 150°C (UL RTI)
- Open Back Design (Insulator Strip Required for Voltage Rating - see page 112)
- JJ (GDI-30F) Material Available
- Screws, #2-56 Binder Head, Phil-Slot, Brass
- Terminals, Plated Brass
- 1-23 Poles
- 1/4" Centers
- Wire Range With Wire Binding Screw
#18 - #20 AWG – 5 Amps
- UL Recognized File No. XCFR2.E47811
- CSA Certified File No. LR19766
- **CE**
- RoHS Compliant

Kulka® Catalog #	# of poles	Dimensions	
		A	B
411 GP 01 PSB	1	0.75	0.50
411 GP 02 PSB	2	1.00	0.75
411 GP 03 PSB	3	1.25	1.00
411 GP 04 PSB	4	1.50	1.25
411 GP 05 PSB	5	1.75	1.50
411 GP 06 PSB	6	2.00	1.75
411 GP 07 PSB	7	2.25	2.00
411 GP 08 PSB	8	2.50	2.25
411 GP 09 PSB	9	2.75	2.50
411 GP 10 PSB	10	3.00	2.75
411 GP 11 PSB	11	3.25	3.00
411 GP 12 PSB	12	3.50	3.25
411 GP 13 PSB	13	3.75	3.50
411 GP 14 PSB	14	4.00	3.75
411 GP 15 PSB	15	4.25	4.00
411 GP 16 PSB	16	4.50	4.25
411 GP 17 PSB	17	4.75	4.50
411 GP 18 PSB	18	5.00	4.75
411 GP 19 PSB	19	5.25	5.00
411 GP 20 PSB	20	5.50	5.25
411 GP 21 PSB	21	5.75	5.50
411 GP 22 PSB	22	6.00	5.75
411 GP 23 PSB	23	6.25	6.00

mm = dim X 2.54

For electronic drawings or 2D/3D CAD data, submit request at www.marathonsp.com/drawings.html

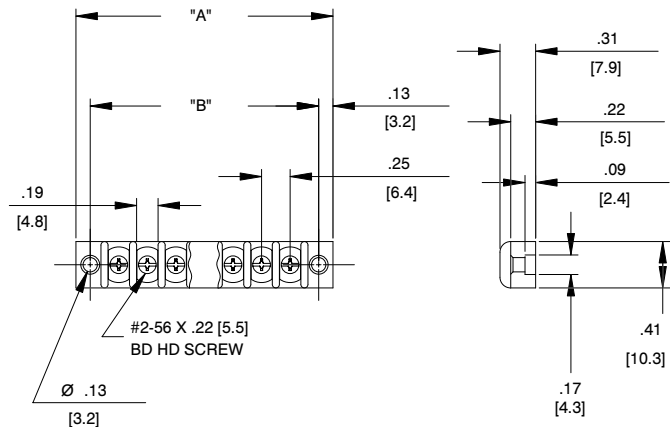
Hardware Options:

(Hardware options may affect ratings - consult Customer Service)

CATALOG #	PRODUCT DESCRIPTION	PAGE REFERENCE
MSP KT10	Full Quick Connect (0° Flat)	See page 104
MSP KT11	Full Quick Connect (45° Bend)	See page 104
MSP KT12	Full Quick Connect (90° Bend)	See page 104
MSP KT16	Half Quick Connect (0° Flat)	See page 104
MSP KT17	Half Quick Connect (45° Bend)	See page 104
MSP KT18	Half Quick Connect (90° Bend)	See page 104
MSP ST	Full Solder	See page 106
MSP 3/4 ST	Half Solder	See page 106
MSP Z	Lug over the Side (.312)	Consult C/S
MSP J 410	Line to Line Jumper	See page 107
MSP 1921	Printed Circuit Pin (.125) (Over the Side)	Consult C/S
MSP 1904	Feed Thru Solder	Consult C/S

Quick Connects: .020" x .110"

See pages 104-115 for terminal block accessories



Single Row Terminal Blocks

Kulka® 599/799 GP Series

300 Volts AC/DC (Class B)

599 Series only

150 Volts AC/DC (Class C)

599 and 799 Series

Specifications:

- Base, Phenolic, 150°C (UL RTI)
- Open Back Design (Insulator Strip Required for Voltage Rating - see page 112)
- JJ (GDI-30F) Material Available
- Screws, #5-40 Binder Head, Phil-Slot, Brass
- Terminals, Plated Brass
- 1-30 Poles
- 3/8" Centers
- Wire Range With Wire Binding Screw #16 - #22 AWG – 15 Amps
- 799 Series (Riveted KTs) - shown at right, see page 104 for KTs
- UL Recognized File No. XCFR2.E47811
- CSA Certified File No. LR19766
- CE
- RoHS Compliant



599 GP 06 PSB



799 Series

Single Row Terminal Blocks

Hardware Options:

(Hardware options may affect ratings - consult Customer Service)

Kulka® Catalog #	# of poles	Dimensions	
		A	B
599 GP 01 PSB	1	1.03	0.75
599 GP 02 PSB	2	1.41	1.12
599 GP 03 PSB	3	1.78	1.50
599 GP 04 PSB	4	2.16	1.88
599 GP 05 PSB	5	2.53	2.25
599 GP 06 PSB	6	2.91	2.63
599 GP 07 PSB	7	3.28	3.00
599 GP 08 PSB	8	3.66	3.38
599 GP 09 PSB	9	4.03	3.75
599 GP 10 PSB	10	4.41	4.13
599 GP 11 PSB	11	4.78	4.50
599 GP 12 PSB	12	5.16	4.88
599 GP 13 PSB	13	5.53	5.25
599 GP 14 PSB	14	5.91	5.63
599 GP 15 PSB	15	6.28	6.00
599 GP 16 PSB	16	6.66	6.38
599 GP 17 PSB	17	7.03	6.75
599 GP 18 PSB	18	7.41	7.13
599 GP 19 PSB	19	7.78	7.50
599 GP 20 PSB	20	8.16	7.88
599 GP 21 PSB	21	8.53	8.25
599 GP 22 PSB	22	8.91	8.63
599 GP 23 PSB	23	9.28	9.00
599 GP 24 PSB	24	9.66	9.38
599 GP 25 PSB	25	10.03	9.75
599 GP 26 PSB	26	10.41	10.13
599 GP 27 PSB	27	10.78	10.50
599 GP 28 PSB	28	11.16	10.88
599 GP 29 PSB	29	11.53	11.25
599 GP 30 PSB	30	11.91	11.63

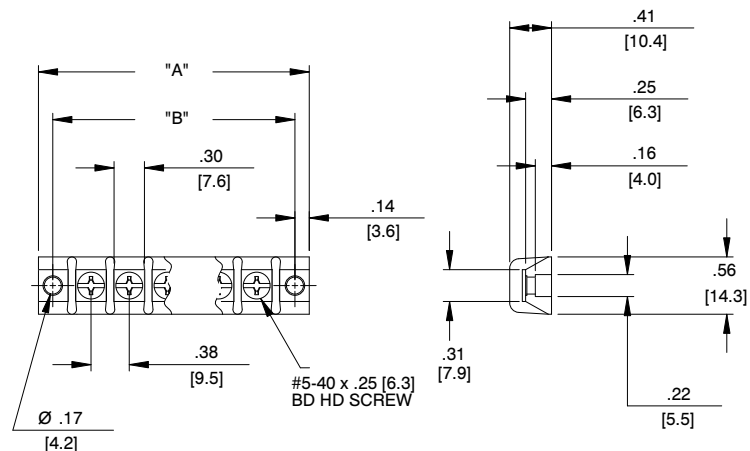
mm = dim X 25.4

For electronic drawings or 2D/3D CAD data, submit request at www.marathonsp.com/drawings.html

CATALOG #	PRODUCT DESCRIPTION	PAGE REFERENCE
MSP	KULKA	
KT28	Full Quick Connect (0° Flat)	See page 104
KT29	Full Quick Connect (45° Bend)	See page 104
KT30	Full Quick Connect (90° Bend)	See page 104
KT34	Half Quick Connect (0° Flat)	See page 104
KT35	Half Quick Connect (45° Bend)	See page 104
KT36	Half Quick Connect (90° Bend)	See page 104
3/4 ST	Half Solder	See page 106
Z	Lug over the Side (.312)	Consult C/S
J 600	Line to Line Jumper	See page 107
600 RJ(S)	Multiple Position Jumper	See page 107
2002	Stud	See page 109
2004	Feed Thru Solder	See page 109
2020	Solder Pin	See page 109
2021	Solder Pin (Slotted Screw)	See page 109

Quick Connects: .020" x .187"

See pages 104-115 for terminal block accessories



Single Row Terminal Blocks

Kulka® 699/899 GP Series

300 Volts AC/DC (Class B)

699 Series only

150 Volts AC/DC (Class C)

699 and 899 Series



699 GP 06



899 Series

Specifications:

- Base, Phenolic, 150°C (UL RTI)
- Open Back Design (Insulator Strip Required for Voltage Rating - see page 112)
- JJ (GDI-30F) Material Available
- Screws, #6-32 Binder Head, Phil-Slot, Steel
- Terminals, Plated Brass
- 1-23 Poles
- 7/16" Centers
- Wire Range With Wire Binding Screw #14 - #16 AWG – 20 Amps
- 899 Series (Riveted KT's) - shown at right, see page 104 for KT's
- UL Recognized File No. XCFR2.E47811
- CSA Certified File No. LR19766
- CE
- RoHS Compliant

Kulka® Catalog #	# of poles	Dimensions	
		A	B
699 GP 01	1	1.19	0.88
699 GP 02	2	1.63	1.31
699 GP 03	3	2.06	1.75
699 GP 04	4	2.50	2.19
699 GP 05	5	2.94	2.63
699 GP 06	6	3.38	3.06
699 GP 07	7	3.81	3.50
699 GP 08	8	4.25	3.94
699 GP 09	9	4.69	4.38
699 GP 10	10	5.12	4.81
699 GP 11	11	5.56	5.25
699 GP 12	12	6.00	5.69
699 GP 13	13	6.44	6.13
699 GP 14	14	6.87	6.56
699 GP 15	15	7.31	7.00
699 GP 16	16	7.75	7.44
699 GP 17	17	8.19	7.88
699 GP 18	18	8.62	8.31
699 GP 19	19	9.06	8.75
699 GP 20	20	9.50	9.19
699 GP 21	21	9.94	9.63
699 GP 22	22	10.37	10.06
699 GP 23	23	10.81	10.50

mm = dim X 25.4

For electronic drawings or 2D/3D CAD data, submit request at www.marathonsp.com/drawings.html

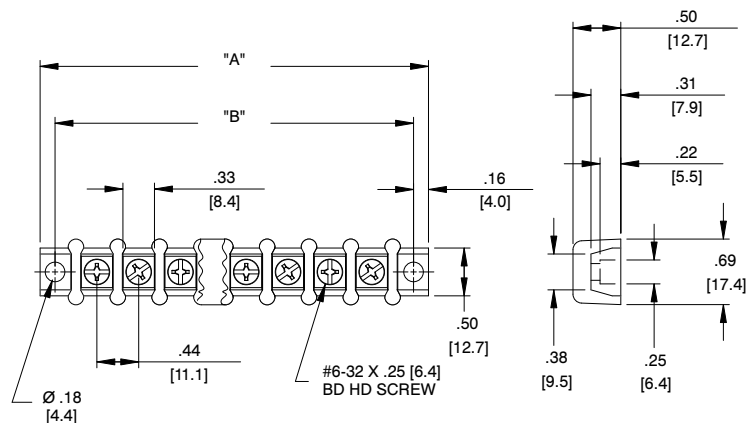
Hardware Options:

(Hardware options may affect ratings - consult Customer Service)

CATALOG #	PRODUCT DESCRIPTION	PAGE REFERENCE
MSP	KULKA	
KT46	Full Quick Connect (0° Flat)	See page 104
KT47	Full Quick Connect (45° Bend)	See page 104
KT48	Full Quick Connect (90° Bend)	See page 104
KT52	Half Quick Connect (0° Flat)	See page 104
KT53	Half Quick Connect (45° Bend)	See page 104
KT54	Half Quick Connect (90° Bend)	See page 104
3/4 ST	Half Solder	See page 106
Z	Lug over the Side (.437)	Consult C/S
J 601	Line to Line Jumper	See page 107
601 RJ(S)	Multiple Position Jumper	See page 107
2102	Stud	See page 109
2104	Feed Thru Solder	See page 109
2120	Solder Pin	See page 109
2121	Solder Pin	See page 109
PSB	Phil-Slot Brass Screw	Consult C/S

Quick Connects: .032" x .250"

See pages 104-115 for terminal block accessories



Single Row Terminal Blocks

Kulka® 812/912 GP Series

600 Volts AC/DC (Classes B/C)

812 Series only

300 Volts AC/DC (Class C)

912 Series only



812 GP 06

Specifications:

- Base, Phenolic, 150°C (UL RTI)
- Open Back Design (Insulator Strip Required for Voltage Rating - see page 112)
- JJ (GDI-30F) Material Available
- Screws, #8-32 Binder Head, Phil-Slot, Steel
- Terminals, Plated Brass
- 1-18 Poles
- 9/16" Centers
- Wire Range With Wire Binding Screw
#12 - #14 AWG – 30 Amps
- 912 Series (Riveted KT's) - shown at right, see page 104 for KT's
- UL Recognized File No. XCFR2.E47811
- CSA Certified File No. LR19766
- **CE**
- RoHS Compliant

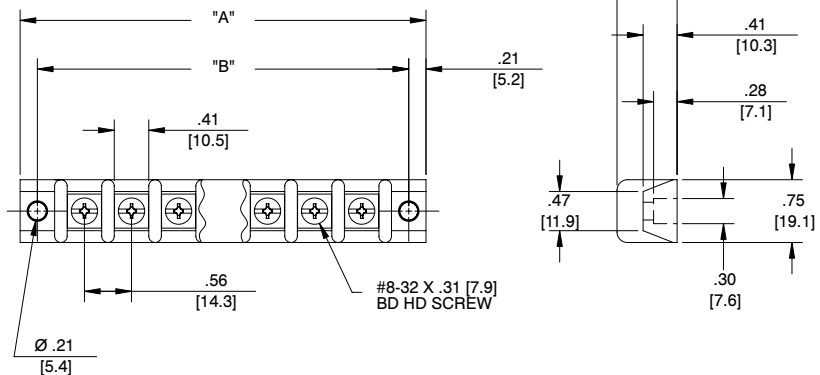


912 Series

Kulka® Catalog #	# of poles	Dimensions	
		A	B
812 GP 01	1	1.53	1.13
812 GP 02	2	2.09	1.69
812 GP 03	3	2.66	2.25
812 GP 04	4	3.22	2.81
812 GP 05	5	3.78	3.38
812 GP 06	6	4.34	3.94
812 GP 07	7	4.91	4.50
812 GP 08	8	5.47	5.06
812 GP 09	9	6.03	5.63
812 GP 10	10	6.59	6.19
812 GP 11	11	7.16	6.75
812 GP 12	12	7.72	7.31
812 GP 13	13	8.28	7.88
812 GP 14	14	8.84	8.44
812 GP 15	15	9.41	9.00
812 GP 16	16	9.97	9.56
812 GP 17	17	10.53	10.13
812 GP 18	18	11.09	10.69

mm = dim X 25.4

For electronic drawings or 2D/3D CAD data, submit request at www.marathonsp.com/drawings.html



Hardware Options:

(Hardware options may affect ratings - consult Customer Service)

CATALOG #	PRODUCT DESCRIPTION	PAGE REFERENCE
MSP	KULKA	
KT73	Full Quick Connect (0° Flat)	See page 104
KT74	Full Quick Connect (45° Bend)	See page 104
KT75	Full Quick Connect (90° Bend)	See page 104
KT79	Half Quick Connect (0° Flat)	See page 104
KT80	Half Quick Connect (45° Bend)	See page 104
KT81	Half Quick Connect (90° Bend)	See page 104
3/4 ST	Half Solder	See page 106
Z	Lug over the Side (.641)	Consult C/S
J 602	Line to Line Jumper	See page 107
2202	Stud	See page 109
2204	Feed Thru Solder	See page 109
PSB	Phil-Slot Brass Screw	Consult C/S

Quick Connects: .032" x .250"

See pages 104-115 for terminal block accessories

Single Row Terminal Blocks


Kulka® 1690 GP Series

300 Volts AC/DC (Class B)
150 Volts AC/DC (Class C)



Top to bottom: 1694 GP 04 PSB, 1691 GP 06 PSB

Specifications:

- Base, Phenolic, 150°C (UL RTI)
- Screws, #6-32 Binder Head, Phil-Slot, Brass
- Terminals, Plated Brass
- Two speed-nuts supplied per part
- 7/16" Centers
- Wire Range #14-22 Max. - 20 Amps
- UL Recognized File No. XCFR2.E47811
- CSA Certified File No. LR19766
- 
- RoHS Compliant

TERMINAL BLOCK SERIES

# of poles	1691 GP 1692 GP 1693 GP		1694 GP 1695 GP 1696 GP		1697 GP 1698 GP 1699 GP	
	A	B	A	B	A	B
1	0.34	--	1.22	0.88	0.53	--
2	0.78	0.44	1.66	1.31	0.97	0.44
3	1.22	0.88	2.09	1.75	1.41	0.88
4	1.66	1.31	2.53	2.19	1.84	1.31
5	2.09	1.75	2.97	2.63	2.28	1.75
6	2.53	2.19	3.41	3.06	2.72	2.19
7	2.97	2.63	3.84	3.50	3.16	2.63
8	3.41	3.06	4.28	3.94	3.59	3.06
9	3.84	3.50	4.72	4.38	4.03	3.50
10	4.28	3.94	5.16	4.81	4.47	3.94
11	4.72	4.38	5.59	5.25	4.91	4.38
12	5.16	4.81	6.03	5.69	5.34	4.81
13	5.59	5.25	6.47	6.13	5.78	5.25
14	6.03	5.69	6.91	6.56	6.22	5.69
15	6.47	6.13	7.34	7.00	6.66	6.13
16	6.91	6.56	7.78	7.44	7.09	6.56
17	7.34	7.00	8.22	7.88	7.53	7.00
18	7.78	7.44	8.66	8.31	7.97	7.44
19	8.22	7.88	9.09	8.75	8.41	7.88
20	8.66	8.31	9.53	9.19	8.84	8.31
21	9.09	8.75	9.97	9.63	9.28	8.75
22	9.53	9.19	10.41	10.06	9.72	9.19
23	9.97	9.63	10.84	10.50	10.16	9.63
24	10.41	10.06	--	--	--	--
25	10.84	10.50	--	--	--	--

mm = dim X 25.4

Include "PSB" after part # when ordering (169X GP XX PSB)

See page 100 for 1690 Series Terminal block dimensions.

Hardware Options:

(Hardware options may affect ratings - consult Customer Service)

CATALOG # MSP KULKA	PRODUCT DESCRIPTION	PAGE REFERENCE
KT46	Full Quick Connect (0° Flat)	See page 104
KT47	Full Quick Connect (45° Bend)	See page 104
KT48	Full Quick Connect (90° Bend)	See page 104
KT52	Half Quick Connect (0° Flat)	See page 104
KT53	Half Quick Connect (45° Bend)	See page 104
KT54	Half Quick Connect (90° Bend)	See page 104
3/4 ST	Half Solder	See page 106
J 601	Line to Line Jumper	See page 107
601 RJ(S)	Multiple Position Jumper	See page 107

Quick Connects: .032" x .250"

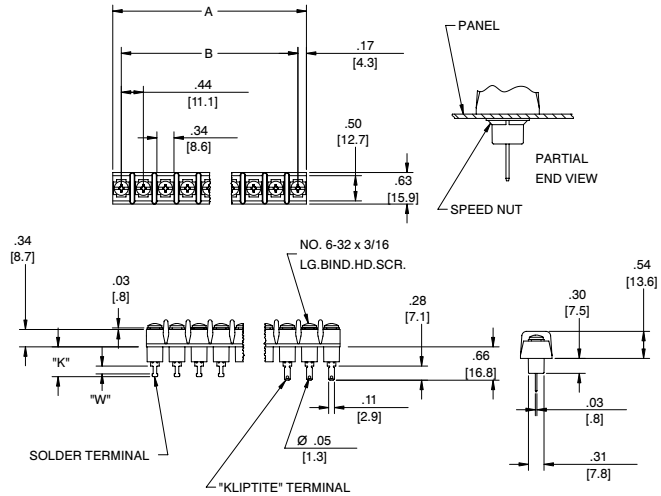
See pages 104-115 for terminal block accessories

Single Row Terminal Blocks

Kulka® 1690 GP Series (cont.)

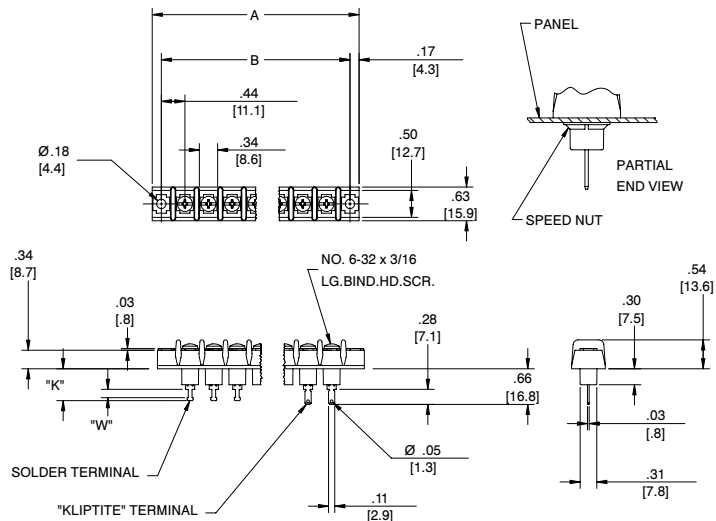
TERMINAL BLOCK SERIES 1691 GP / 1692 GP / 1693 GP

- 1691 GP Series** Solder terminal
K = .52 [13.10]; W = .06 [1.59]
- 1692 GP Series** Kliptite terminal
- 1693 GP Series** Solder terminal
K = .58 [14.68]; W = .13 [3.18]



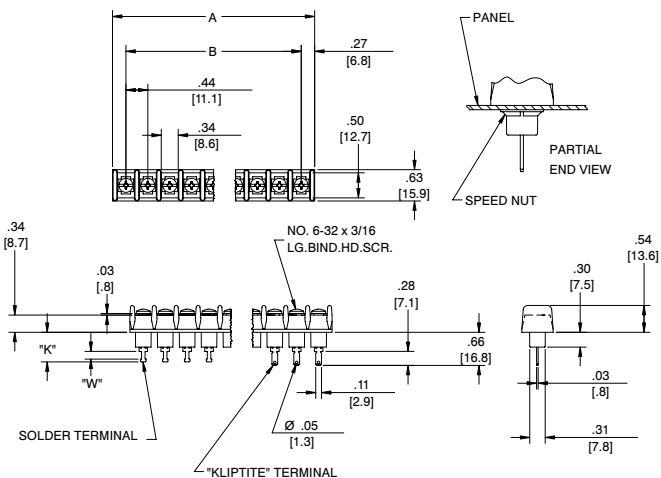
TERMINAL BLOCK SERIES 1694 GP / 1695 GP / 1696 GP

- 1694 GP Series** Solder terminal
K = .52 [13.10]; W = .06 [1.59]
- 1695 GP Series** Kliptite terminal
- 1696 GP Series** Solder terminal
K = .58 [14.68]; W = .13 [3.18]



TERMINAL BLOCK SERIES 1697 GP / 1698 GP / 1699 GP

- 1697 GP Series** Solder terminal
K = .52 [13.10]; W = .06 [1.59]
- 1698 GP Series** Kliptite terminal
- 1699 GP Series** Solder terminal
K = .58 [14.68]; W = .13 [3.18]



For electronic drawings or 2D/3D CAD data, submit request at www.marathonsp.com/drawings.html

Single Row Terminal Blocks

Kulka® 2590 GP Series

300 Volts AC/DC (Class B)
150 Volts AC/DC (Class C)

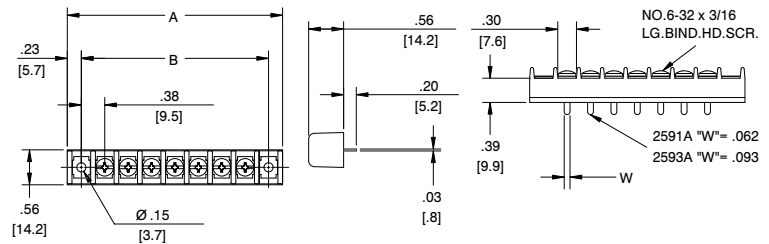


2599A GP 04 PSB

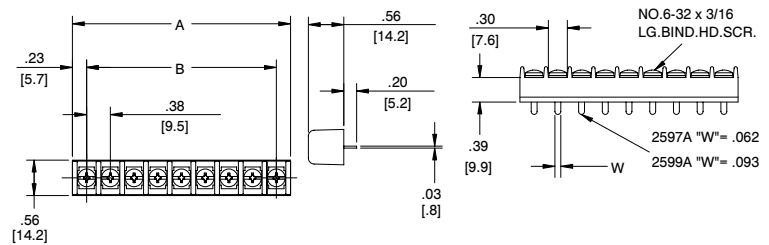
Specifications:

- Base, Phenolic, 150°C (UL RTI)
- Screws, #6-32 Binder Head, Slotted, Brass
- Terminals, Plated Brass
- 3/8" Centers
- Wire Range #16 Max. - 15 Amps
- The Suitability Of These Devices For Greater Currents Shall Be Determined In the End-Use Application
- UL Recognized File No. XCFR2.E47811
- CSA Certified File No. LR19766
- **CE**
- RoHS Compliant

Series 2591A GP / 2593A GP



Series 2597A GP / 2599A GP



Hardware Options:

(Hardware options may affect ratings - consult Customer Service)

CATALOG #	PRODUCT DESCRIPTION	PAGE REFERENCE
MSP	KULKA	
KT28	Full Quick Connect (0° Flat)	See page 104
KT29	Full Quick Connect (45° Bend)	See page 104
KT30	Full Quick Connect (90° Bend)	See page 104
KT34	Half Quick Connect (0° Flat)	See page 104
KT35	Half Quick Connect (45° Bend)	See page 104
KT36	Half Quick Connect (90° Bend)	See page 104
3/4 ST	Half Solder	See page 106
Y	Lug Over the Side (.359)	See page 106
Z	Lug Over the Side (.172)	See page 106
J 600	Line to Line Jumper	See page 107
600 RJ(S)	Multiple Position Jumper	See page 107
3000	Wire Wrap Lug (.641)	Consult C/S

Quick Connects: .032" x .250"

See pages 104-115 for terminal block accessories

TERMINAL BLOCK SERIES

# of poles	2591A GP 2593A GP		2597A GP 2599A GP	
	A	B	A	B
1	1.19	0.75	0.44	--
2	1.56	1.13	0.81	0.38
3	1.94	1.50	1.19	0.75
4	2.31	1.88	1.56	1.13
5	2.69	2.25	1.94	1.50
6	3.06	2.63	2.31	1.88
7	3.44	3.00	2.69	2.25
8	3.81	3.38	3.06	2.63
9	4.19	3.75	3.44	3.00
10	4.56	4.13	3.81	3.38
11	4.94	4.50	4.19	3.75
12	5.31	4.88	4.56	4.13
13	5.69	5.25	4.94	4.50
14	6.06	5.63	5.31	4.88
15	6.44	6.00	5.69	5.25
16	6.81	6.38	6.06	5.63
17	7.19	6.75	6.44	6.00
18	7.56	7.13	6.81	6.38
19	7.94	7.50	7.19	6.75
20	8.31	7.88	7.56	7.13
21	8.69	8.25	7.94	7.50
22	9.06	8.63	8.31	7.88
23	9.44	9.00	8.69	8.25
24	--	--	9.06	8.63
25	--	--	9.44	9.00

mm = dim X 25.4

For electronic drawings or 2D/3D CAD data, submit request at www.marathonsp.com/drawings.html

Datasheets available at marathonsp.com

Single Row Terminal Blocks

Kulka® 2690 GP Series

300 Volts AC/DC (Class B)
150 Volts AC/DC (Class C)

Specifications:

- Base, Phenolic, 150°C (UL RTI)
- Screws, #6-32 Binder Head, Slotted or #8-32 Binder Head, Slotted, Brass
- Terminals, Plated Brass
- 7/16" Centers
- Wire Range #14-16 AWG - 20 Amps
- UL Recognized File No. XCFR2.E47811
- CSA Certified File No. LR19766
- CE
- RoHS Compliant



Top to bottom: 2695A GP 04, 2699A GP 04
(Mounting plates are shipped loose)

TERMINAL BLOCK SERIES

# of poles	2694 GP / 2694A GP 2695 GP / 2695A GP 2696 GP / 2696A GP		2697 GP / 2697A GP 2698 GP / 2698A GP 2699 GP / 2699A GP	
	Dimensions		Dimensions	
	A	B	A	B
1	1.41	0.88	0.53	--
2	1.84	1.31	0.97	0.44
3	2.28	1.75	1.41	0.88
4	2.72	2.19	1.84	1.31
5	3.16	2.63	2.28	1.75
6	3.59	3.06	2.72	2.19
7	4.03	3.50	3.16	2.63
8	4.47	3.94	3.59	3.06
9	4.91	4.38	4.03	3.50
10	5.34	4.81	4.47	3.94
11	5.78	5.25	4.91	4.38
12	6.22	5.69	5.34	4.81
13	6.66	6.13	5.78	5.25
14	7.09	6.56	6.22	5.69
15	7.53	7.00	6.66	6.13
16	7.97	7.44	7.09	6.56
17	8.41	7.88	7.53	7.00
18	8.84	8.31	7.97	7.44
19	9.28	8.75	8.41	7.88
20	9.72	9.19	8.84	8.31
21	10.16	9.63	9.28	8.75
22	10.59	10.06	9.72	9.19
23	11.03	10.50	10.16	9.63
24	-	-	10.59	10.06
25	-	-	11.03	10.50

mm = dim X 25.4

See page 103 for 2690 Series Terminal block dimensions.

Hardware Options:

(Hardware options may affect ratings - consult Customer Service)

CATALOG #	PRODUCT DESCRIPTION	PAGE REFERENCE
MSP		
KULKA		
KT28	Full Quick Connect (0° Flat)	See page 104
KT29	Full Quick Connect (45° Bend)	See page 104
KT30	Full Quick Connect (90° Bend)	See page 104
KT34	Half Quick Connect (0° Flat)	See page 104
KT35	Half Quick Connect (45° Bend)	See page 104
KT36	Half Quick Connect (90° Bend)	See page 104
KT46	Full Quick Connect (0° Flat)	See page 104
KT47	Full Quick Connect (45° Bend)	See page 104
KT48	Full Quick Connect (90° Bend)	See page 104
KT52	Half Quick Connect (0° Flat)	See page 104
KT53	Half Quick Connect (45° Bend)	See page 104
KT54	Half Quick Connect (90° Bend)	See page 104
3/4 ST	Half Solder	See page 106
Y	Lug Over the Side (.609)	See page 106
Z	Lug Over the Side (.344)	See page 106
J 601	Line to Line Jumper	See page 107
601 RJ(S)	Multiple Position Jumper	See page 107

Quick Connects (KT28-36): .020" x .187" - Quick Connects (KT46-54): .032" x .250"

See pages 104-115 for terminal block accessories

Single Row Terminal Blocks

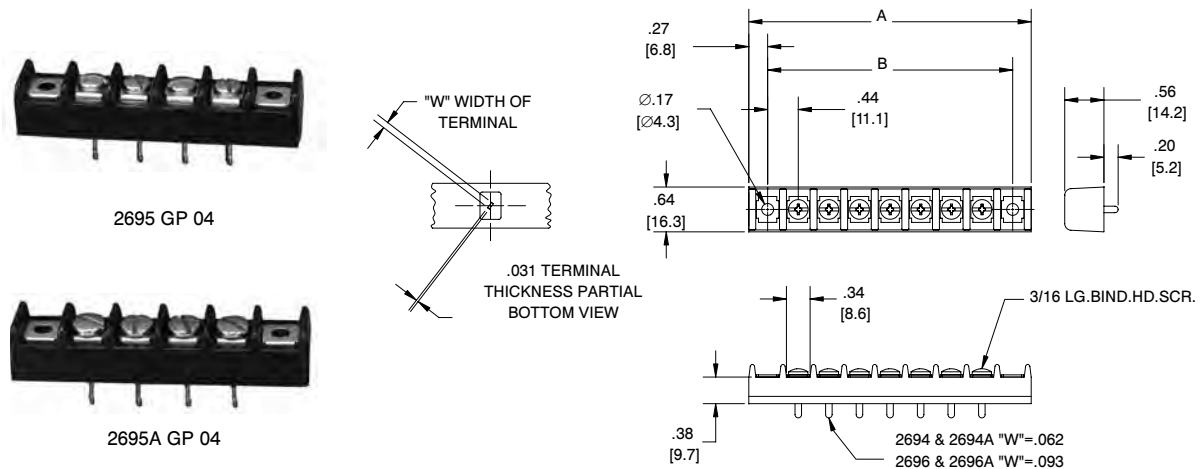
Kulka® 2690 GP Series (cont.)

TERMINAL BLOCK SERIES: 2694 GP / 2694A GP / 2695 GP 2695A GP / 2696 GP / 2696A GP

DEFINITION BARRIER ENDS:

2694 GP #6-32 Brass Screw, Printed Circuit Width = .062
2695 GP #6-32 Brass Screw, Solder Turret (not shown)
2696 GP #6-32 Brass Screw, Printed Circuit Width = .093

2694A GP #8-32 Brass Screw, Printed Circuit Width = .062
2695A GP #8-32 Brass Screw, Solder Turret (not shown)
2696A GP #8-32 Brass Screw, Printed Circuit Width = .093



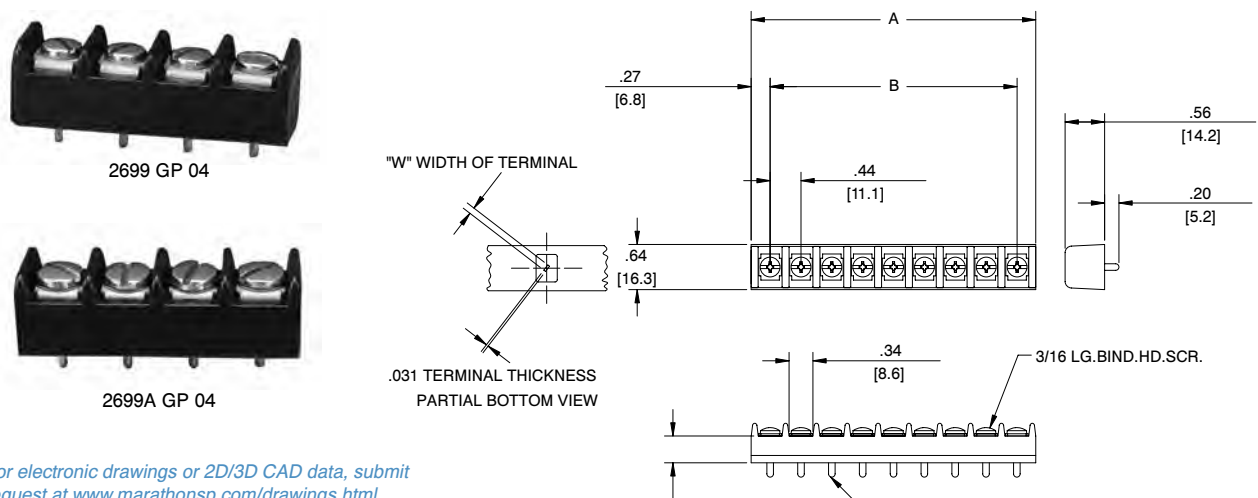
(Mounting plates are shipped loose)

TERMINAL BLOCK SERIES: 2697 GP / 2698 GP / 2699 GP 2697A GP / 2698A GP / 2699A GP

DEFINITION BARRIER ENDS:

2697 GP #6-32 Brass Screw, Printed Circuit Width = .062
2698 GP #6-32 Brass Screw, Solder Turret (not shown)
2699 GP #6-32 Brass Screw, Printed Circuit Width = .093

2697A GP #8-32 Brass Screw, Printed Circuit Width = .062
2698A GP #8-32 Brass Screw, Solder Turret (not shown)
2699A GP #8-32 Brass Screw, Printed Circuit Width = .093



For electronic drawings or 2D/3D CAD data, submit request at www.marathonsp.com/drawings.html

Datasheets available at marathonsp.com