

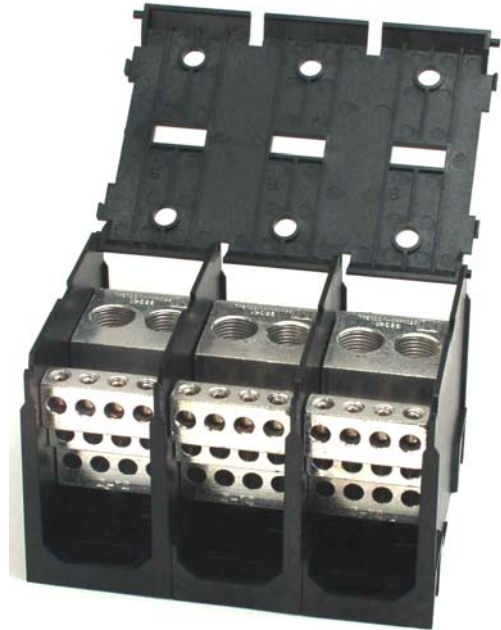
Product Data Sheet



133X596 CH

Replace "X" with 1, 2 or 3 for number of poles

Distribution Power Block
510 Amps, 600 Volts (AC/DC)
1,000V AC/DC CE (IEC 60947-7-1)



Wire Range:

Line side: (2) 250kcmil – 1/0
 Load Side: (12) #4 - #14 AWG

See tables below for SCCR wire ranges, flexible stranded and multiple wire approvals.

Electrical Ratings:

- 510A copper wire, 410A aluminum wire (Based on NEC Table 310-16, 75°C columns)
- CE Rated Voltage (U_i): 1,000 V AC/DC per IEC 60947-7-1
- Material Group: IIIa
- Pollution Degree: 3
- 600 Volts AC/DC (UL 1059 Class C, User Group - General Industrial)
- Factory and Field Wiring

Short Circuit Current Ratings (Copper wire only):

Wire Class	Suitable Conductors (kcmil/AWG)		Overcurrent Protection Fuse Required Class/Max Amp Rating						SCCR, RMS SYM Amps
			J	T	RK1	RK5	G	CC	
B,C	250 - 1/0	4 - 14	600	600	600	200	60	30	100,000
G,H,I,K	3/0 - 1/0	6 - 14	150	150	100	30	60	30	100,000

Mechanical Ratings:

- Insulator base and cover temperature: -40°C/F to 125°C (257°F) UL RTI
- Flammability rating of insulator base and cover: UL 94 V-0
- * Use outside these ratings needs to be judged in the end-use application.

Materials:

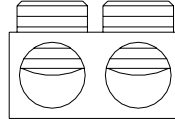
- Connector: High conductivity aluminum, tin plated
- Insulator base: Glass filled polycarbonate (thermoplastic)
- Terminal set screws: Steel, nickel plated and Aluminum, tin plated
- Connector mounting screws: Steel, zinc plated
- Hinged Cover: Glass filled polycarbonate (thermoplastic)

Agency Approvals:

- UL Recognized, UL 1059 Terminal Block Standard, File No. XCFR2.E62806
- CSA Certified, CSA C22.2 No. 158, File No. LR19766 (Wire Classes B & C only)
- CE compliant to IEC 60947-7-1
- RoHS Compliant

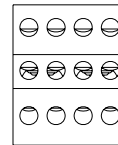
Wire Approvals:

Line Side Wire Approvals:



Wire Size	Torque		Copper Wire Stranding Classes - Number of Conductors						
	N-m	In. lbs	Solid	Class B	Class C	Class G	Class H	Class I	Class K
250 kcmil	31.1	275		37	61				
4/0	31.1	275		19	37	1	1		
3/0	31.1	275		19	37	1	1	1	1
2/0	31.1	275		19	37	1	1	1	1

Aluminum stranded wire range: 250kcmil – 1/0



Load Side Wire Approvals:

Wire Size	Torque		Copper Wire Stranding Classes - Number of Conductors						
	N-m	In. lbs	Solid	Class B	Class C	Class G	Class H	Class I	Class K
4 AWG	4.0	35		1	1				
6	4.0	35		1	1	1	1	1	1
8	4.0	35		1	1	1	1	1	1
10	4.0	35	1	1 - 2	1 - 2			1 - 2	1 - 2
12	4.0	35	1	1 - 4	1 - 4			1 - 2	1 - 2
14	4.0	35	1	1 - 4	1 - 4			1 - 2	1 - 2

* Multiple conductor approvals for **LOAD** side only. (copper wire only)

Aluminum stranded wire ranges: #4 – #14 AWG

For information on copper stranded wire classes, please reference:
<http://www.marathonsp.com/CatalogPDFs/Flexible-Stranded-Wire.pdf>

- Wire strip length, line side tap – 1 9/16”
- Wire strip length, load side tap, top row – 1/2”, middle row – 11/16”, bottom row - 15/16”
- Hex keys required: line side - 5/16”, load side - 1/8”

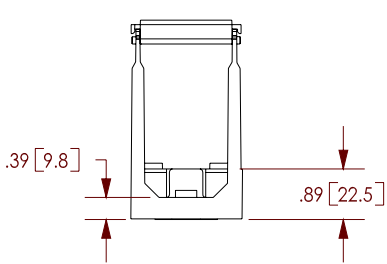
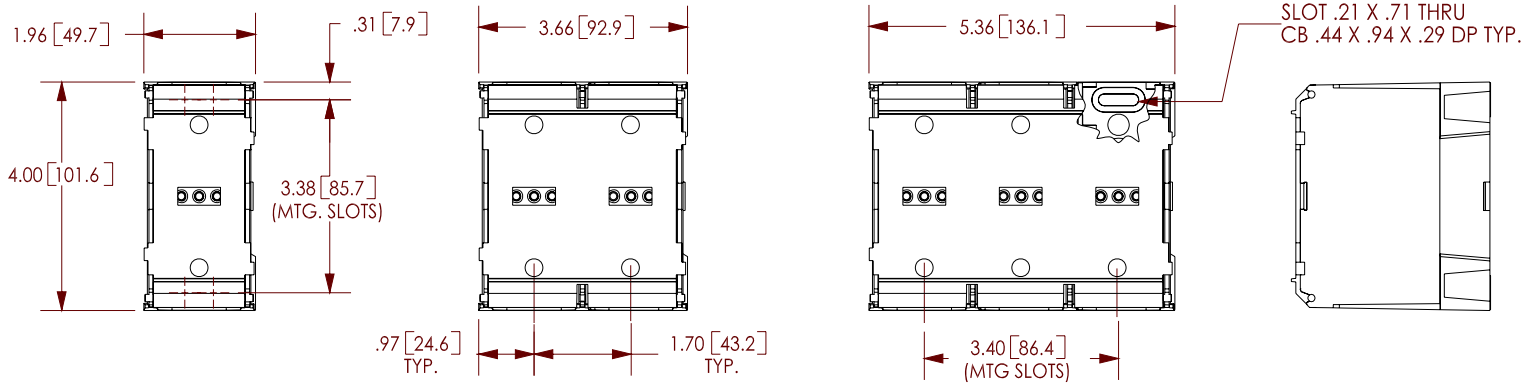
Mounting:

- Panel mountable: #10 fastener, torque to 25-30 in. lbs.

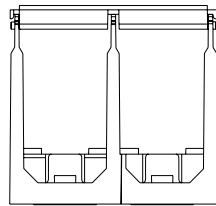
For information on copper stranded wire classes, please reference:
<http://www.marathonsp.com/CatalogPDFs/Flexible-Stranded-Wire.pdf>

Accessories:

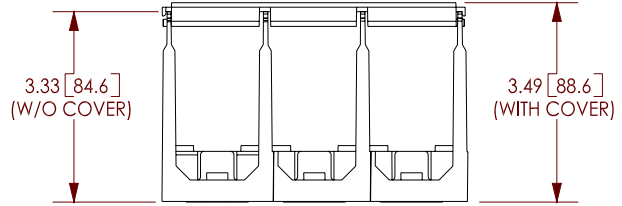
- Marker Strips. Printing available. Consult factory.



1 Pole



2 Pole



3 Pole

WWW.MARATHONSP.COM
1-419-352-8441