

Product Data Sheet



3XX Series Modified

Replace "XX" with 01 through 24 for number of poles
Terminal Block– Closed Back
Modified Construction
30 Amps, 600 Volts (AC/DC)



(Variety of hardware shown)

Copper Wire Only

Wire Range with Wire Binding Screw: #10 - #14 AWG
Wire Range with Listed Lugs: #10 - #16 AWG

9/16" Centers

[See table below for Wire Classes and torque](#)

Electrical Ratings:

- 30A with unprepared wire, (Based on NEC Table 310-16, 75°C columns)
- 30A with Listed ring lug, (Based on NEC Table 310-16, 75°C columns)
- 600 Volts AC/DC (UL 1059 Class C, User Group – General Industrial)
- Short Circuit Current Rating: 10,000A (Default)
- Approved for Factory Wiring.

Mechanical Ratings:

- Storage and transportation temperature range: -35°C to 110°C (-31°F to 230°F)*
 - Maximum insulator base temperature: 150°C (302°F)* UL RTI
 - Flammability rating of insulator base: UL 94V-0
- * Use outside these ratings needs to be judged in the end-use application.

Materials:

- Connector (Contact): Brass, tin plated.
- Insulator base: Phenolic
- Drive screw (Rivet): Stainless steel
- Screw, #8-32 Binder head, Phil-Slot: Steel, nickel plated

Agency Approvals:

- UL Recognized, UL 1059 Terminal Block Standard, File No. XCFR2.E62806
- CSA Certified, CSA C22.2 No. 158, File No. LR19766
- CE compliant, IEC 60947-7-1
- RoHS Compliant

Wire Range:

Wire Size	Torque	Copper Wire Stranding Classes - Number of Strands		
		Solid	Class B	Class C
10	20 in. Lbs	1	7	19
12	20 in. Lbs	1	7	19
14	20 in. Lbs	1	7	19
16	20 in. Lbs	1	7	19

Suggested product mounting hardware: #8 fastener, torque to 15-20 in. lbs.

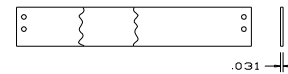
ACCESSORIES:

- Printing (for printing options, see Terminal Block Printing on website)

- Cover – top mounted (May not accommodate some hardware options) . Order CW (white) or CB (Black). Can be printed.



- Marking strips (For Printing Options, see section on website)



- Line to Line Jumper (LL300)



- Quick Connects or Fastons

F1 or KT55



F2 or KT56



F3 or KT57



Tab width: 0.250
Tab thickness: 0.032

- Half Quick Connects or Half Fastons

HF1 or KT61

HF2 or KT62

HF3 or KT63

- Solder Terminal (S)



- Half Solder Terminal (HS)



- Feed Thru Solder (L)



- Feed Thru Solder (LSL)



- Sems Pressure Saddle Screw (SP)



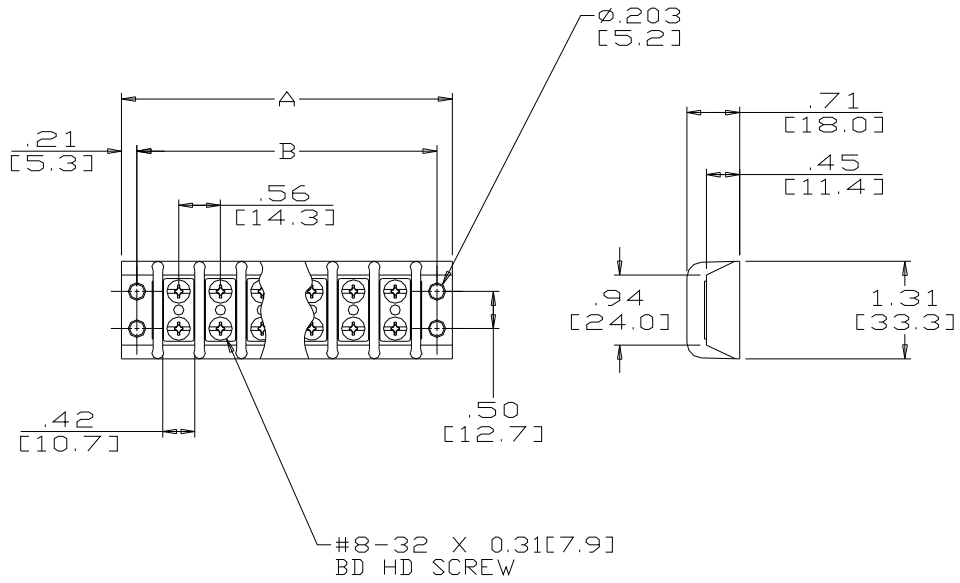
- Sems Pressure Saddle Screw with External Lock Washer (SPSE)



- Phil-Slot Brass Screw (PSB)



Accessory options may affect ratings – consult factory



MSP CATALOG #	# OF POLES	DIMENSIONS		MSP CATALOG #	# OF POLES	DIMENSIONS	
		A	B			A	B
301	1	1.54	1.13	313	13	8.29	7.88
302	2	2.10	1.69	314	14	8.85	8.44
303	3	2.66	2.25	315	15	9.41	9.00
304	4	3.22	2.81	316	16	9.97	9.56
305	5	3.78	3.38	317	17	10.54	10.13
306	6	4.35	3.94	318	18	11.10	10.69
307	7	4.91	4.50	319	19	11.66	11.25
308	8	5.47	5.06	320	20	12.22	11.81
309	9	6.04	5.63	321	21	12.79	12.38
310	10	6.60	6.19	322	22	13.35	12.94
311	11	7.16	6.75	323	23	13.91	13.50
312	12	7.72	7.31	324	24	14.47	14.06

Top Mounted Hardware is .250" Wide

MM = Dim X 25.4

WWW.MARATHONSP.COM
1-419-352-8441