

# Product Data Sheet



## ST722B19XX (back mount)

Replace "XX" with 02 through 06 for number of poles

Studded Power Block  
Feed Thru  
175 Amps, 300 Volts AC/DC



2-pole shown

### Wire Range:

#2/0 - #8 AWG Copper Stranded Wire

Mounting Screws Included

Accommodates Two Hole Compression Lugs on .625" centers – wires #2 and larger may require narrow lugs.

### 0.73" Centers

#### Electrical Ratings:

- 175A (Based on NEC Table 310-16, 75°C columns)
- 300 Volts AC/DC (UL 1059 Class B – Commercial Appliances and C - General Industrial)
- Short Circuit Current Rated for 10,000 Amps.
- Factory and Field Wiring

#### Mechanical Ratings:

- Maximum insulator base temperature: 125°C (257°F) UL RTI
- Storage and transportation temperature range: -35°C to 110°C (-31°F to 230°F)
- Flammability rating of insulator base: UL 94 V-0
  - Use outside these ratings needs to be judged in the end-use application.

#### Materials:

- Studs: #10-32: Brass, Nickel plated
- Insulator base: Glass-filled polycarbonate (Thermoplastic)

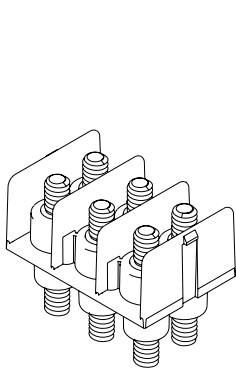
#### Agency Approvals:

- UL Recognized, UL 1059 Terminal Block Standard, File No. XCFR2.E62806
- CSA Certified, CSA C22.2 No. 158, File No. LR19766
- CE compliant to IEC 60947-7-1
- RoHS Compliant

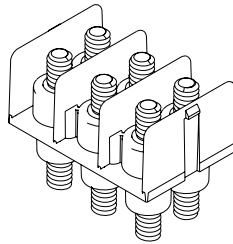
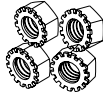
Application Torque: 35 in-lbs.

- Panel mountable: #6 fastener, torque to 20 in. lbs.

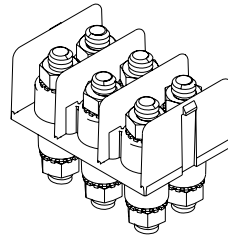
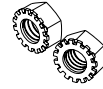
Hardware Options:



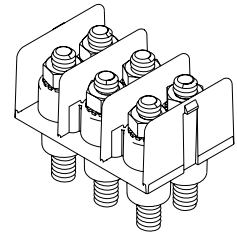
**ST722B19XX**  
 1) No Hardware Included  
 2) Mounting Screws packed loose



**ST722B19XXUH**  
 1) (4) Nuts per line packed loose  
 2) Mounting Screws packed loose



**ST722B19XXAH**  
 1) (4) Nuts per line assembled  
 2) Mounting Screws packed loose

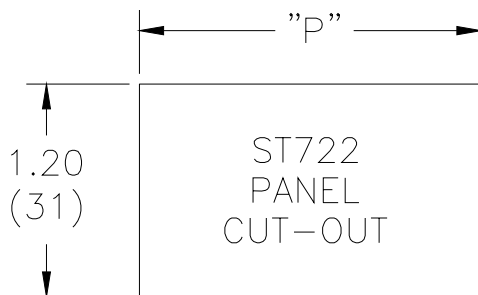


**ST722B19XXDL**  
 1) (2) Nuts per line assembled barrier side  
 2) (2) Nuts per line packed loose bottom side  
 3) Mounting Screws packed loose

Accessories:

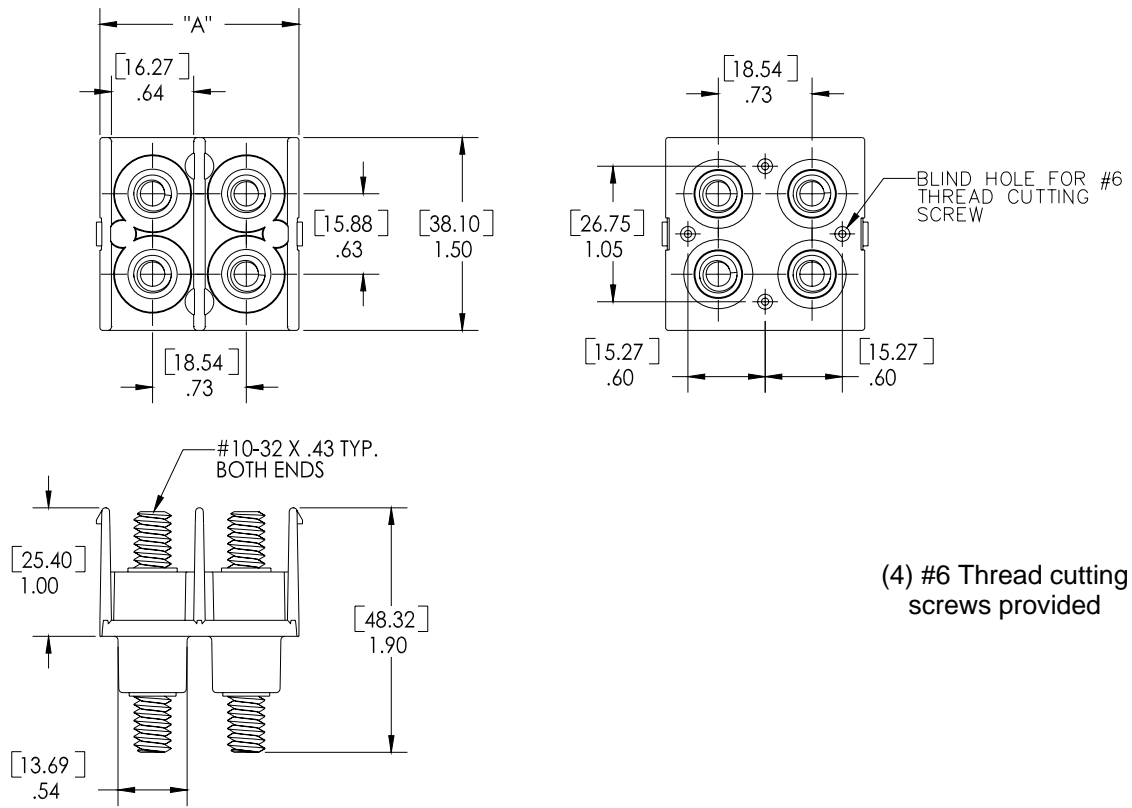
- Cover: order C722XX (XX = line length 1 through 6)

Mounting Cutout:



LENGTH	"P"	
	ENG.	MET.
1-LINE	.62	15.7
2-LINE	1.35	34.3
3-LINE	2.08	52.8
4-LINE	2.81	71.4
5-LINE	3.54	89.9
6-LINE	4.27	108.5

## Product Dimensions:



(4) #6 Thread cutting screws provided

Catalog #	# of Poles	A	Metric
722	2	1.55	(39.37)
722	3	2.28	(57.91)
722	4	3.01	(75.45)
722	5	3.74	(95.00)
722	6	4.47	(113.54)

[WWW.MARATHONSP.COM](http://WWW.MARATHONSP.COM)

1-419-352-8441

PDS 0296 REV C 6/05/09