

7/16" Sectional Terminal Block

Marathon Special Products has been an industry leader in electrical/electronic components designed for circuit protection and connection applications for over 60 years.

The new 7/16" **Sectional Terminal Blocks** have been tested and comply to UL and CSA standards. This includes versatile capabilities such as use with multiple wires and with flexible stranded wire classes.



6G44 SP DIN

MECHANICAL

- Base - Gray Thermoplastic, 125°C (UL RTI)
- Connector - Brass, Tin Plated
- DIN Mounted, 27 Circuits per Foot
- Screw - #6 with pad, Steel, Phil-Slot, Nickel Plated
- 600 Volts AC/DC, 40 Amp

WIRE RANGES

- CU only, Str/Sol, Classes B, C, G, H, I, K
- Wire Termination Torque 10 lb-in
- Base Wire: (1) #12-22 AWG, (1-2) #22-12 AWG
- Prepared Wire (Lug or Spade):
(1) #10-#16 AWG, (1-2) #10-16 AWG

ACCESSORIES

- 6G44 E DIN (End Sections)
- MS44 (7/16 marker strip - 4' long, white)
- 601 RJS XX - Jumper (various lengths)
- MSK35 (End Bracket for DIN Rail)
- MN35-2 (DIN rail, 35 x 7.5mm, 2m long, slotted)

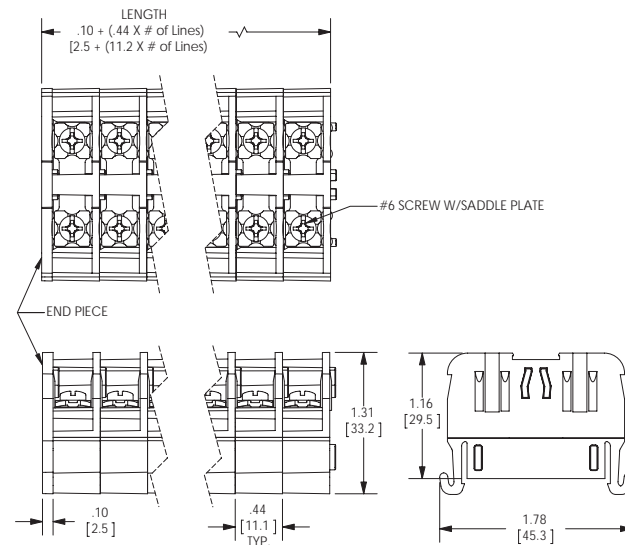
CERTIFICATIONS

- UL Recognized File No. XCFR2.E62806, XCFR8.E62806
- CSA Certified File No. LR19766
- RoHS Compliant



These small profile blocks accommodate lugged or bare wires up to 40 amps, and are mountable on standard DIN rails. The new series has a robust design that allows it to withstand abuse that tends to break or distort existing sectional blocks.

These blocks are ideal for elevator systems and industrial control panels where flexibility of circuit design is necessary.



Marathon's short lead times, technical support, and excellent customer service assure you receive a quality product as quickly as possible. Please visit www.marathonsp.com for detailed datasheets and specific product information.



13300 Van Camp Road • P.O. Box 468 • Bowling Green, Ohio 43402

Phone: (419) 352-8441 • Fax: (419) 352-0875 • marketing@marathonsp.com

www.marathonsp.com

