

## Class G Fuse Holder

# RG30AXB

Replace "X" with 1 or 3 for number of poles

### Wire Range

- #6 - #14 AWG

### Electrical Ratings

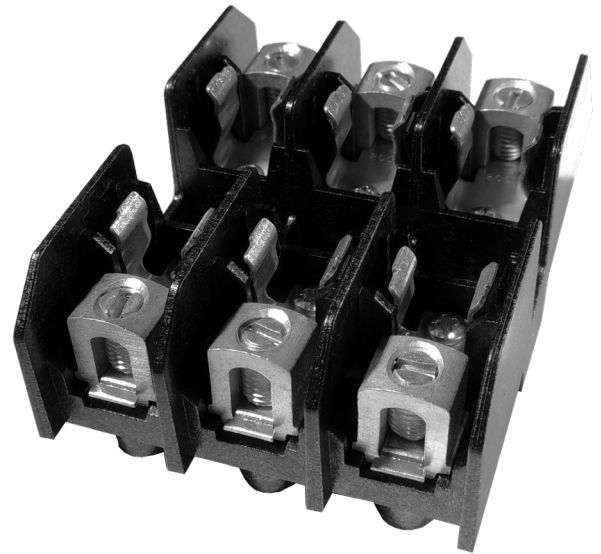
- 0 - 30A Max
  - Amperage rating based on maximum fuse rating for that physical size
- Copper Wire Only
- 600 Volts AC/DC
- Approved for 100,000 Amp Withstand Rating

### Agency Compliance

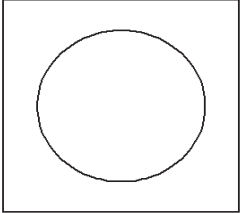
- UL Listed, Fuseholder standards UL 4248-1 and 4248-5
- UL File No. IZLT.E35113
- CSA Certified: 22.2 No 39 - M1987, File No. LR21455
- CE compliant to IEC 60947-1
- RoHS Compliant

### Material Information

- Connector: Aluminum, tin plated
- Insulator base:
  - High Impact Thermoplastic
  - Flammability rating of insulator base UL94 V-0
  - Insulator base maximum temperature rating: 125°C (UL RTI)
  - Touch protection: IP-20 (IEC 60529) with optional cover CJ660 (See accessories)
- Use outside these ratings needs to be judged in the end-use application
- Fuse Clip: Copper alloy, tin plated
- Slotted set screws - 1/4 -28: Steel, nickel plated
- Fuse Clip anchor screws: Steel, zinc plated



Termination Specifications

Line and Load Side	Wire Size (CU Stranded)	Torque	Wires/ Terminal	Wire Class (UL)
	#6 - #14	25 in. lbs (2.8 N-m)	1	Solid Cu, B, C

Installation & Accessories

• Mounting (Panel):

- For use with #8 fastener,
- Mounting torque to be determined in end use application. Not to exceed 15 lbf-in (1.7 N-M)

• Fuse Information:

- Fuses are not supplied by MSP
- Holds fuse size 13/32" diameter x 1 5/8"
- Although any 30A Class G fuses can be used, commonly used G-Class fuses are as follows, but not limited to:  
AG, SC, SLC
- Life cycle status of these noted fuses has not been reviewed, and others are available

• Cover:

- Cover: CC630. Glass-filled polycarbonate (thermoplastic). 125°C (UL RTI), Flammability rating UL 94 V-0, UL Listed File No. JDVS2.181825.
- Cover Puller: CVR-MCC
- DIN Rail Adapter: Din R-1

Drawing

