

DIN (EURO-STYLE) SECTIONAL TERMINAL BLOCKS HARDWARE

Insulating end sections - cover the last terminal of an assembly

Insulating partitions - for visual and electrical separation of terminals grouped on DIN rail

2-position jumpers - connect two adjacent terminals (middle portion snaps off to assemble)

12-position jumpers - connects up to 12 adjacent terminals (middle portion snaps off to assemble); jumper can be easily cut to length to connect smaller assemblies

End brackets - anchors on both ends of terminal assemblies to hold the assembly in place

DIN rail - standard 35 x 7.5 mm DIN rail, cut in 2 meter lengths with slots for mounting (steel, zinc plated)

	MIK3	MIK5	MIK10	MIK16	MIK25	
Insulating End Sections	MIW2	MIW4	MIW16	MIW16	MIW50	OBSOLETE
Insulating Partitions	MIW4	MIW16	MIW50	MIW50	-	OBSOLETE
2-Position Jumper	MVB2-2	MVB4-2	MVB6-2	MVB16-2	MVB25	OBSOLETE
12-Position Jumper	MVB2-12	MVB4-12	MVB6-12	MVB16-12	-	OBSOLETE
End Bracket/Anchor ¹	MSK35	MSK35	MSK35	MSK35	MSK35	Still Valid Accessory

¹MSK35 - End Bracket Securing Torque 7-9 lb-in (.8-1 N-m)

OBSOLETE

UNIVERSAL IDENTIFICATION LABELS TYPE MSH SPECIFICATIONS:

Available plain, with numbers, letters or symbols

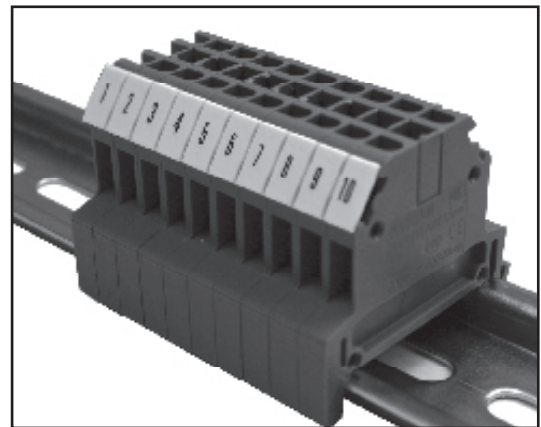
Can be labeled vertically or horizontally

Single label MSH 5 can be used for all sizes

MSH5 & MSH6 are sold in ten strips of ten

MSH8 & MSH10 are sold in ten strips of five

RoHS compliant



OBSOLETE

ORDERING CODE:

