

SOLDER TERMINAL LUGS - ST AND 3/4 ST TYPES

MATERIAL: BRASS, TIN PLATED

SERIES	FIGURE	DIMENSIONS				
		A	B	C	D	E
599 3/4 ST	3	0.09	0.14	0.16	0.06	0.16
600, 600A, 670A ST	4	0.09	0.14	0.16	0.06	0.16
600, 600A, 670A 3/4 ST	5	0.09	0.14	0.16	0.06	0.16
601 ST	4	0.125	0.15	0.21	0.06	0.21
601 3/4 ST	5	0.125	0.15	0.21	0.06	0.21
602 ST	4	0.125	0.18	0.28	0.09	0.28
602 3/4 ST	5	0.125	0.18	0.28	0.09	0.28
699 3/4 ST	3	0.125	0.15	0.21	0.06	0.21
812 ST	3	0.125	0.18	0.28	0.09	0.28

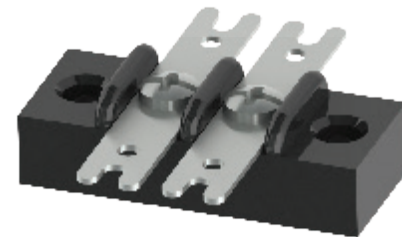


FIGURE 1

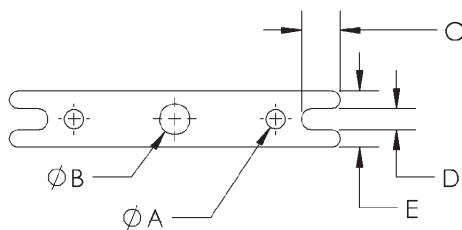


FIGURE 2

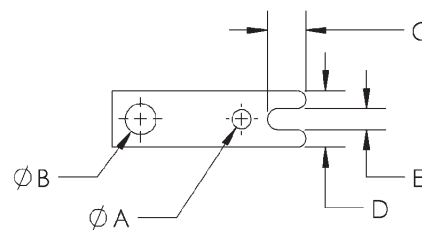


FIGURE 3

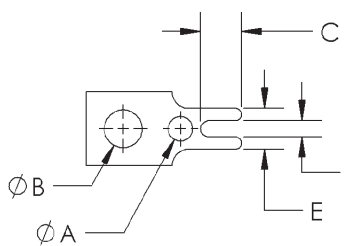


FIGURE 4

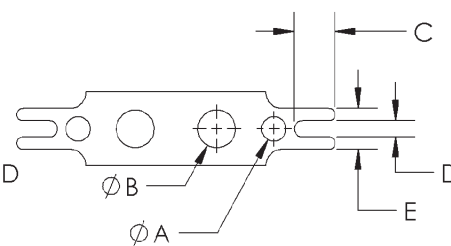


FIGURE 5

