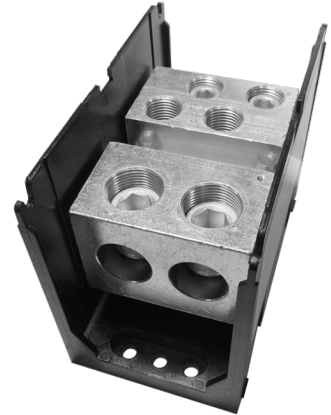


POWER DISTRIBUTION BLOCK

135X605

Replace "X" with 1, 2, 3 for number of poles



Wire Range

- Line Side: (2) 600 kcmil - 2 AWG Copper or Aluminum, Code Wire
- Load Side: (4) 350 kcmil - 6AWG Copper or Aluminum, Code Wire

Electrical Ratings:

- 950A maximum
- 600 Volts AC/DC (UL1059 User Groups; Class A, B, and C)
- Factory and Field Wiring
- CU9AL - 90°C connector terminal rating with copper and aluminum wire
- Compliant to UL 508A Feeder Circuit Requirements
- Short circuit current ratings (SCCR): See SCCR section below for specifications.

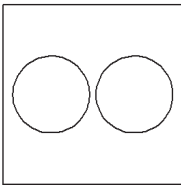
Agency Compliance

- cURus, UL Recognized, Investigated to US and Canadian standards (UL 1059 and CSA 22.2)
- Files XCFR2.E62806 and XCFR8.E62806
- CE Compliant to IEC 60947-7-1

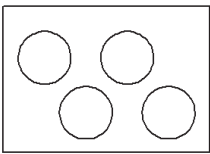
Material Information

- Insulator base:
 - Thermoplastic
 - Flammability rating of insulator base UL94V0
 - Temperature rating: 257°F, 125°C
- Connector - plated aluminum
- Terminal screws - plated steel
- RoHS Compliant

Termination Specifications

Line Side	Wire Size (CU + AL Stranded)	Torque	Wires/ Terminal	Wire Class (UL) ¹
	600kcmil - 2AWG	56.5 N.m (500 lbf-in)	1	B, C

- Aluminum stranded wire range: 600kcmil - 2AWG
- Solid Copper wire range : 600kcmil - 2AWG
- Wire Strip Length: 1-1/2"
- Terminal Screw Drive: 1/2" hex

Load Side	Wire Size (CU + AL Stranded)	Torque	Wires/ Terminal	Wire Class (UL) ¹
	350kcmil - 6AWG	31 N.m (275 lbf-in)	1	B, C

- Aluminum stranded wire range: 350kcmil - 6AWG
- Solid Copper wire range : 600kcmil - 6AWG
- Wire strip length (load side):
 - Top Row: 7/8" (22.2 mm)
 - Bottom Row: 1-3/4" (44.5 mm)
- Terminal Screw Drive: 5/16" hex
- For information on copper stranded wire classes please reference
 - <http://www.marathonsp.com/CatalogPDFs/Flexible-Stranded-Wire.pdf>

Short Circuit Current Ratings (SCCR)

- The suitable conductor ranges are limited to the table values only for achieving the SCCR ratings in excess of the default rating of 10,000A.
- Other conductor combinations within the “Terminal Specifications” noted are suitable for achieving a SCCR of 10,000A (the default rating of terminal blocks).
- SCCR ratings achieved with 16x12x6 enclosure

Suitable Conductors (kcmil/AWG) Copper, Stranded				Overcurrent Protection Fuse Class/Max Amp Rating						SCCR, RMS SYM Amps
Line		Load		J	T	RK1	RK5	G	CC	100,000
Size	Class	Size	Class							
600 -2	B, C	350 - 6	B, C	600	600	600	200	60	30	

Installation & Accessories

- Mounting (Panel):
 - For use with 1/4" Fasteners (4-pole)
 - Mounting torque to be determined in end use application, not to exceed 30 in.lbs (3.4 N.)
- Safety Guidelines:
 - Use specified hardware (washers & nuts).
 - Accessory cover (optional) is not intended to provide insulation for electrical spacings.
 - Stack lugs in decreasing width order. Ensure contact is maintained throughout the connection.
- Covers
 - Catalog number CH1351
 - One Cover per pole (Ex: 1353605) would need (3) CH1351's
 - Covers are black polycarbonate

Drawing

