

Product Data Sheet

POWER DISTRIBUTION BLOCK

135X701

Replace "X" with 1, 2, 3 for number of poles

Wire Range

- Line Side: (1) 750 kcmil - 1/0 AWG
- Load Side: (1) 750 kcmil - 1/0 AWG

Electrical Ratings

- 475Amps
- 600 Volts AC/DC (UL 1953)
- Factory and Field Wiring

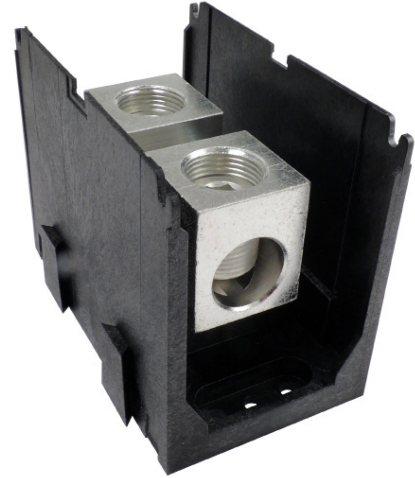
Agency Compliance

- cULus - UL Listed, investigated to UL 1953, UL File QPQS.E309401 and UL evaluated to CSA 22.2 No 158 File no. QPQS7.309401

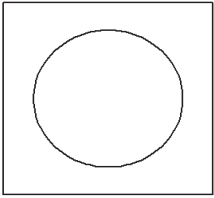
Material Information

- Insulator base:
 - Thermoplastic
 - Temperature rating: 125° C (257° F)
 - Flamability rating of insulator base: UL 94 V-0
- Connector - plated aluminum
- Connector mounting screw: plated steel
- RoHS Compliant

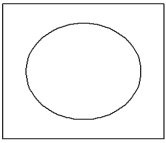
marathon[®]
Special Products



Termination Specifications

Line Side	Wire Size (CU Stranded)	Torque	Wires/ Terminal	Wire Class (UL) ¹
	750 - 1/0	67.8 N.m (600 in. lbs)	1	B, C
	535 - 1/0	67.8 N.m (600 in. lbs)	1	G, H, I

- Aluminum stranded wire range: 750 - 1/0
- Solid copper wire range: 750 - 1/0
- Wire strip length: 1 7/8"
- Terminal screw drive: 5/16 in. hex

Load Side	Wire Size (CU Stranded)	Torque	Wires/ Terminal	Wire Class (UL) ¹
	750 - 1/0	67.8 N.m (600 in. lbs)	1	B, C
	535 - 1/0	67.8 N.m (600 in. lbs)	1	G, H, I

- Aluminum stranded wire range: 750 - 1/0
- Solid copper wire range: 750 - 1/0
- Wire strip length: 1 7/8"
- Terminal screw drive: 5/16 in. hex

¹ For information on copper stranded wire classes please visit:
<http://www.marathonsp.com/flexible-stranded-wire.php>

Short Circuit Current Ratings (SCCR)

- The suitable conductor ranges are limited to the table values only for achieving the SCCR in excess of the default rating of 10,000A.
- Other conductor combinations within the “Terminal Specifications” noted are suitable for achieving a SCCR of 10,000A (the default rating of terminal blocks).
- Enclosure size – Investigated with a minimum 20x24x8 enclosure. Use in smaller enclosures is subject to end use evaluation.
- SCCR Ratings apply for Copper Stranded wire only

Wire Class	Suitable Conductors Copper, Stranded		Overcurrent Protection Fuse Class/Max Amp Rating					SCCR, RMS SYM Amps	Volts Max
	Line	Load	J	T	RK1	RK5	G		
	Size	Size							
B, C,	750 - 1/0	750 - 1/0	600	1200	600	400	60	100,000	600
G, H, I	535 - 1/0	535 - 1/0	600	700	600	200	60		

Installation and Accessories

- Mounting (Panel)
For use with ¼”fasteners (4 pole)
Mounting torque to be determined in end use application, not to exceed 30 in. lbs. (3.4 N.m)
- Covers
Catalog number CH1351
One Cover per pole (Ex: 1353701) would need (3) CH1351’s
Covers are black polycarbonate

Drawing

