

# Product Data Sheet



## 15XX H

Replace XX with 02, 04, 06, 08 or 12 for number of poles  
**1500 Series with Hinged Cover**

**30 Amps, 600 Volts AC/DC  
(Unprepared Wire)**

or

**75 Amps, 600 Volts AC/DC when  
wired with crimp type ring, spade or  
fork terminal**

**5/8" Line to Line Spacing**

**Wire Range (with unprepared wire):**  
#10 - #16 AWG Copper

[See tables below for wire sizes.](#)

### Electrical Ratings:

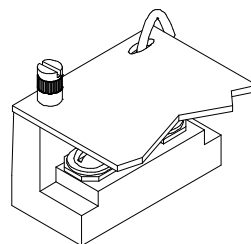
- 30A (unprepared wire) (Based on NEC Table 310-16, 75°C columns)
- 75A (when wired with crimp type ring, spade or fork terminal) (Based on NEC Table 310-16, 75°C columns)
- 600 Volts AC/DC (UL 1059 Class C, User Group - General Industrial)
- Short Circuit Current Rated for 10,000 Amps.
- Factory and Field Wiring

### Mechanical Ratings:

- Maximum insulator base temperature: 150°C (302°F) UL RTI
- Storage and transportation temperature range: -35°C to 125°C (-31°F to 257°F)
- Flammability rating of insulator base: UL 94 V-0
  - Use outside these ratings needs to be judged in the end-use application.



8 pole shown



Standard Connector  
with Hinged Cover

**Materials:**

- Connector: Brass, nickel plated
- Insulator base: Phenolic
- Screws: Brass, nickel plated, 10-32
- Marking Strip: Vinyl (white)
- Marking strip anchor screws: Steel, zinc plated
- Hinged Cover: Phenolic
- Hinge: Steel
- Hinge screws: Brass, nickel plated

**Agency Approvals:**

- UL Recognized, UL 1059 Terminal Block Standard, File No. XCFR2.E62806
- CSA Certified, CSA C22.2 No. 158, File No. LR19766
- CE compliant to IEC 60947-7-1
- RoHS Compliant

**Wire Approvals (with unprepared wire):**

| Wire Size | Torque     | Copper Wire Stranding Classes - Number of Strands |         |         |
|-----------|------------|---------------------------------------------------|---------|---------|
|           |            | Solid                                             | Class B | Class C |
| 10 AWG    | 20 in. lbs | 1                                                 | 7       | 19      |
| 12        | 20 in. lbs | 1                                                 | 7       | 19      |
| 14        | 20 in. lbs | 1                                                 | 7       | 19      |
| 16        | 20 in. lbs | 1                                                 | 7       | 19      |

- Panel mountable: #10 fastener, torque to 25-30 in. lbs.

**Accessories:**

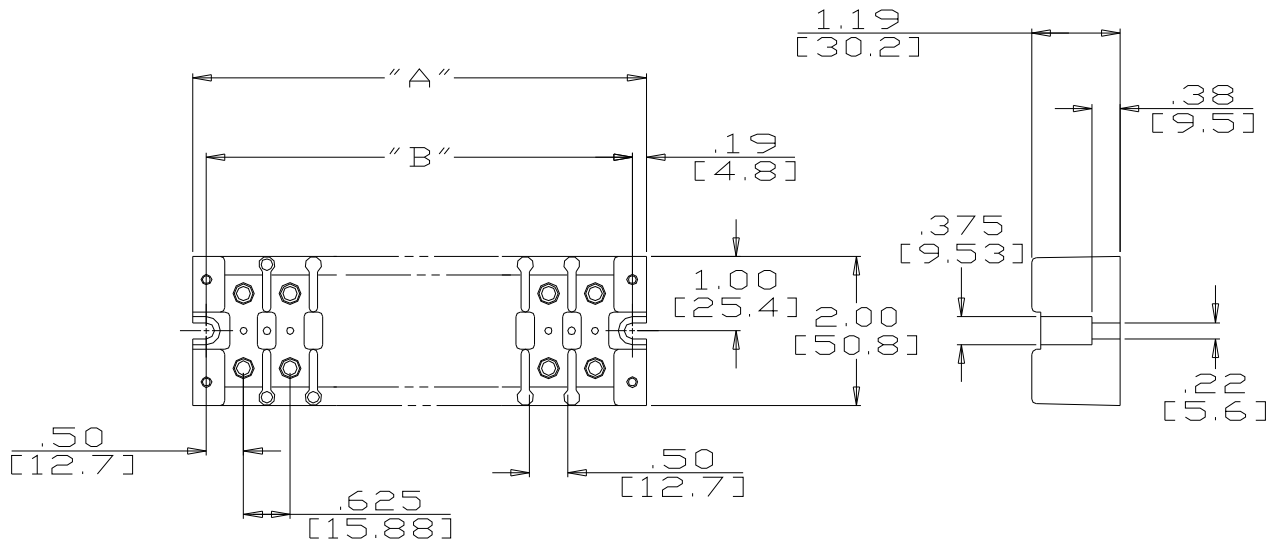
- Sems Pressure Saddle Screw with External Lock Washer (SPSE)



- Printing Available on Marking Strip



Consult factory for custom printed applications



| Catalog # | # of Poles | A    | B    |
|-----------|------------|------|------|
| 1504      | 4          | 3.25 | 2.88 |
| 1506      | 6          | 4.50 | 4.12 |
| 1508      | 8          | 5.75 | 5.38 |
| 1512      | 12         | 8.25 | 7.88 |

MM = Dim X 25.4

[WWW.MARATHONSP.COM](http://WWW.MARATHONSP.COM)  
1-419-352-8441

PDS 0203 REV A 11/07/07