

## Terminal Block **15xx RZ ST**

Replace "x" with 02 - 12 for number of poles.  
Connector is removable.



## Wire Range

- For use with prepared wire on #10 studs

## Electrical Ratings

- Amps
  - 75 Amps (when wired with crimp type ring, spade or fork terminal)
- 600 Volts AC/DC (UL 1059 Class C, User Group - General Industrial)
- Short Circuit Current Rated for 10,000 Amps
- Factory & Field Wiring

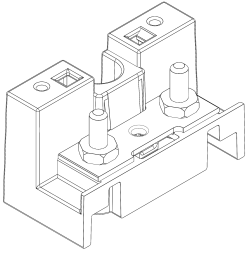
## Agency Compliance

- UL Recognized, UL 1059 Terminal Block Standard, File No. XCFR2.E62806
- CSA - certified to C22.2 No. 158, File No. LR19766
- CE compliant to IEC 60947-7-1
- RoHS Complaint

## Material Information

- Connector: Brass, nickel plated
  - Insulator base:
    - Thermoplastic
    - Flammability rating of insulator base UL94V0
    - Insulator base temperature rating: -40°C to 125°C (UL RTI)
  - Stud: Plated Steel
  - Anchor screws: Steel, zinc plated
  - Nut: Plated Brass
- Marking Strips: Vinyl (White) are not provided and can be ordered seperately.

## Termination Specifications

	Wire Range/ Terminal Type	Torque	Max Lug Width
	Listed Lug, Ring, Fork Terminals	20 in-lbs	.50"

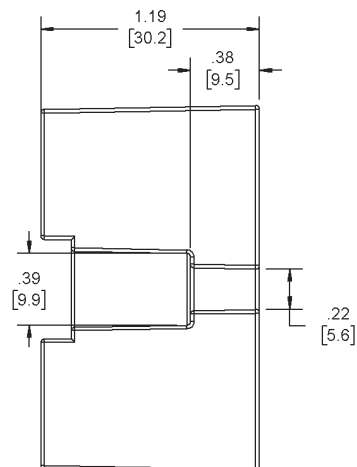
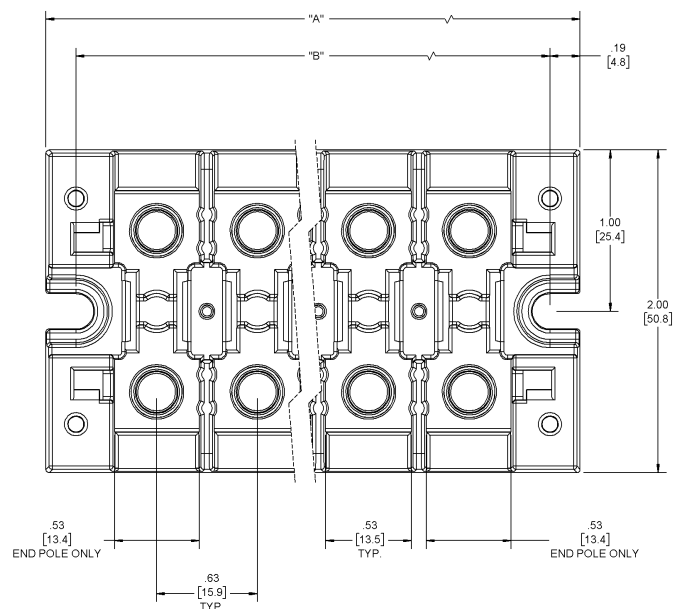
- Total lug stack up: not to exceed 1/8" (.125")

## Installation & Accessories

- Mounting
  - For use with #10 fastener
  - Recommended mounting torque not to exceed 25-30 in lbs
- Jumper
  - MCJ (Multi-Circuit Jumper) Bar Available: Only sold loose and the marking strip must be removed to assemble MCJ bar on part.
- Cover
  - Screw-On Clear cover: Thermoplastic, UL Recognized QMFZ2 - order CC 15XX (XX representing number of poles).
  - Snap-On Translucent Cover: Thermoplastic - Order CVR15XX (XX representing number of poles).
- Printed Marker Strips - Consult factory for custom printed applications (minimum order quantities of 1000 per custom print required)

# Product Data Sheet

## Drawing



Catalog #	# of Poles	A	B
1502	2	2.00	1.63
1503	3	2.63	2.25
1504	4	3.25	2.88
1505	5	3.88	3.50
1506	6	4.50	4.12
1507	7	5.13	4.75
1508	8	5.75	5.38
1509	9	6.38	6.00
1510	10	7.00	6.63
1511	11	7.63	7.25
1512	12	8.25	7.88