

SEMI CONDUCTOR FUSE HOLDER

1MS101



Wire Range

- #2/0 - #6 AWG Copper or Aluminum
- Dove -tail interlocking feature

Electrical Ratings

- 100A max (average rating based on maximum fuse rating for that physical size)
- 600 Vots AC/DC
- Approved for 200,000 Amp Withstand Rating

Agency Compliance

- UL Recognized, Fuseholder standards UL 4248-1 and 4248.1-07
- UI File No. IZLt2.E35113
- cURSus
- CE compliant to IEC 60947-1
- RoHS Complaint

Material Information

- Connector: High conductivity aluminum, tin plated
- Insulator base: General Phenolic
- Terminal set screws: Aluminum, tin plated and Steel, nickel plated
- Connector mounting screws: Steel, zinc plated
- Hex-head bolts: Steel, nickel plated (provided unassembled)
- Belleville washers: Steel, zinc plated (provided unassembled)

Wire Range

Wire Size	Torque		Copper Wire Stranding Classes - Number of Strands		
	N-m	Ln.lbs	Solid	Class B	Class C
2/0 AWG	13.6	120	-	1	1
1/0	13.6	120	-	1	1
1	13.6	120	-	1	1
2	13.6	120	-	1	1
4	13.6	120	-	1	1
6	13.6	120	-	1	1
8	4.5	40	-	1	1
10	4.0	35	1	1	1
12	4.0	35	1	1	1
14	4.0	35	1	1	1

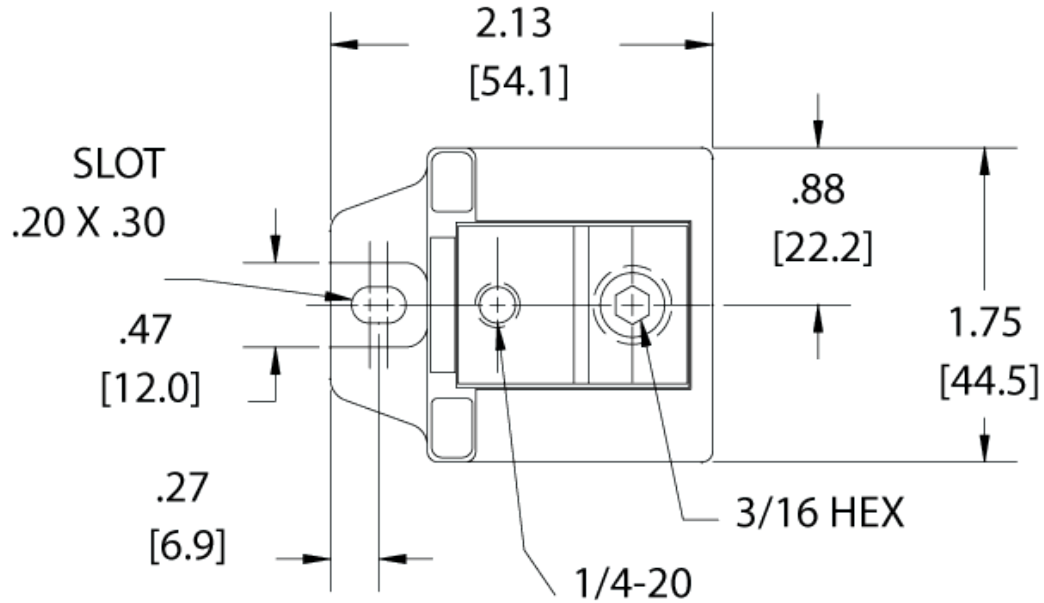
Aluminum stranded wire range: #2/0-#6 AWG

- Recommended fuse torque (on bolt): 7.9 N-m (70in. lbs.)
- Wire strip length: 3/4"
- Hex key required: 3/16"

Mounting:

- Panel mountable: #10 fastener, mounting torque to be determined in end-use application. Not to exceed 25 lbf. (2.8 N-m)

Drawing



Mounting Dimensions			
Fuse	A	B	C
FBP 35-60	2.83	1.50	4.62
FBP 70-100	2.86	1.53	4.65
L15S 61-450*	1.99	0.66	3.79
L50S 31-60	2.45	1.12	4.25
L50S 61-100	2.89	1.56	4.68
L70S 31-60	3.64	2.31	5.43
L70S 61-100	3.64	2.31	5.43
L25S 31-60	2.45	1.12	4.24
L25S 61-200*	2.38	1.05	4.17
JLLS 70-100	2.36	1.03	4.16
KLS 1-30	2.50	1.17	4.30
KLC 31-60	3.63	2.30	5.42
KLC 61-100	4.17	2.84	5.96
L60S 31-60	3.66	2.33	5.45
L60S 61-100	3.66	2.33	5.45