

Class H Fuse Holder - Reinforced

6F200AXBE

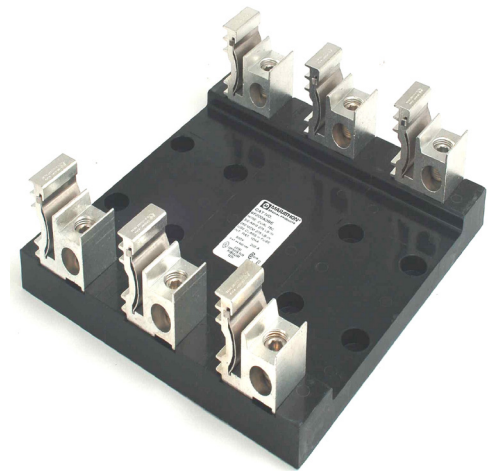
Replace "X" with 1 or 3 for number of poles

Wire Range

250 kcmil - #6 AWG Copper/Aluminum

Holds fuse size 1 3/4" diameter X 9 5/8"

Commonly used fuses in this holder: A6Y, CRS, NLS, NOS, NRS, OTS, RES, RFS, RLS



Electrical Ratings

- 101 - 200A max (amperage rating based on maximum fuse rating for that physical size)
- 600 Volts AC/DC
- Approved for 10,000 Amp Withstand Rating

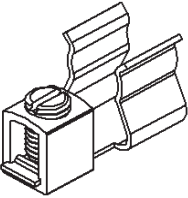
Agency Compliance

- UL Listed, Fuseholder standards UL 4248-1 and UL 4248-6.
- UL File No. IZLT.E35113
- CSA Certified, CSA C22.2 No. 39 – M1987, File No. LR21455
- RoHS Compliant

Material Information

- Maximum insulator base temperature: 130°C (266°F) UL RTI
- Flammability rating of insulator base: UL 94 V-0
- Use outside these ratings needs to be judged in the end-use application.
- Fuse Clip: Aluminum, Tin plated
- Box Connector: High conductivity aluminum, tin plated
- Reinforcing Spring: Stainless Steel
- Insulator base: Thermoset polyester
- Terminal set screws: Aluminum, tin plated
- Connector mounting screws: Steel, zinc plated

Termination Specifications

Line/Load Side	Wire Size (CU Stranded)	Torque	Wires/ Terminal	Wire Class (UL) ¹
	250kcmil - #6	37.1 N.m (275 in. lbs)	1	B, C

Aluminum Stranded Wire Range: 250kcmil - #6 AWG

- Wire strip length – 1 5/16"
- Hex key required 5/16"
- Panel mountable: 5/16" (M8) fastener, mounting torque determined in end-use application. Not to exceed 30 in. lbs. (3.4 N-m)

Drawing

