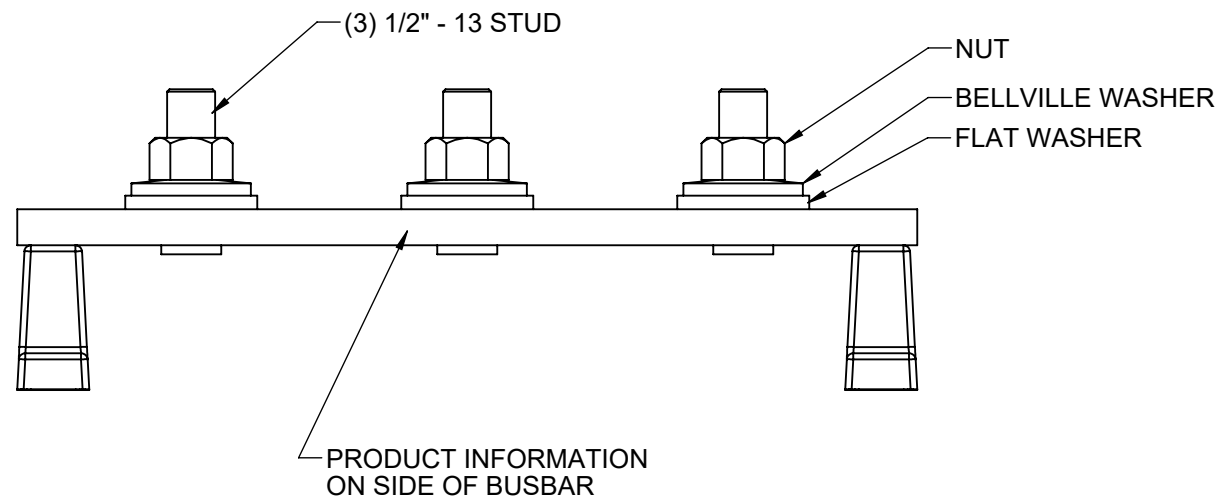
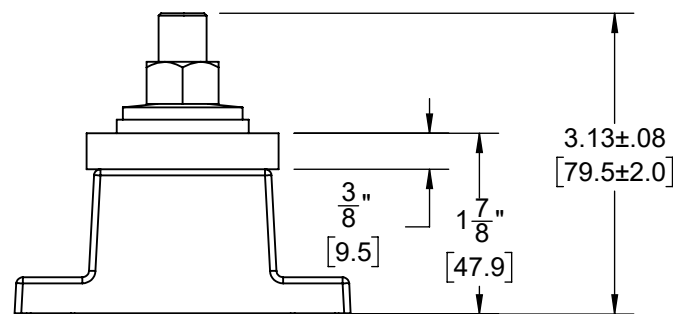
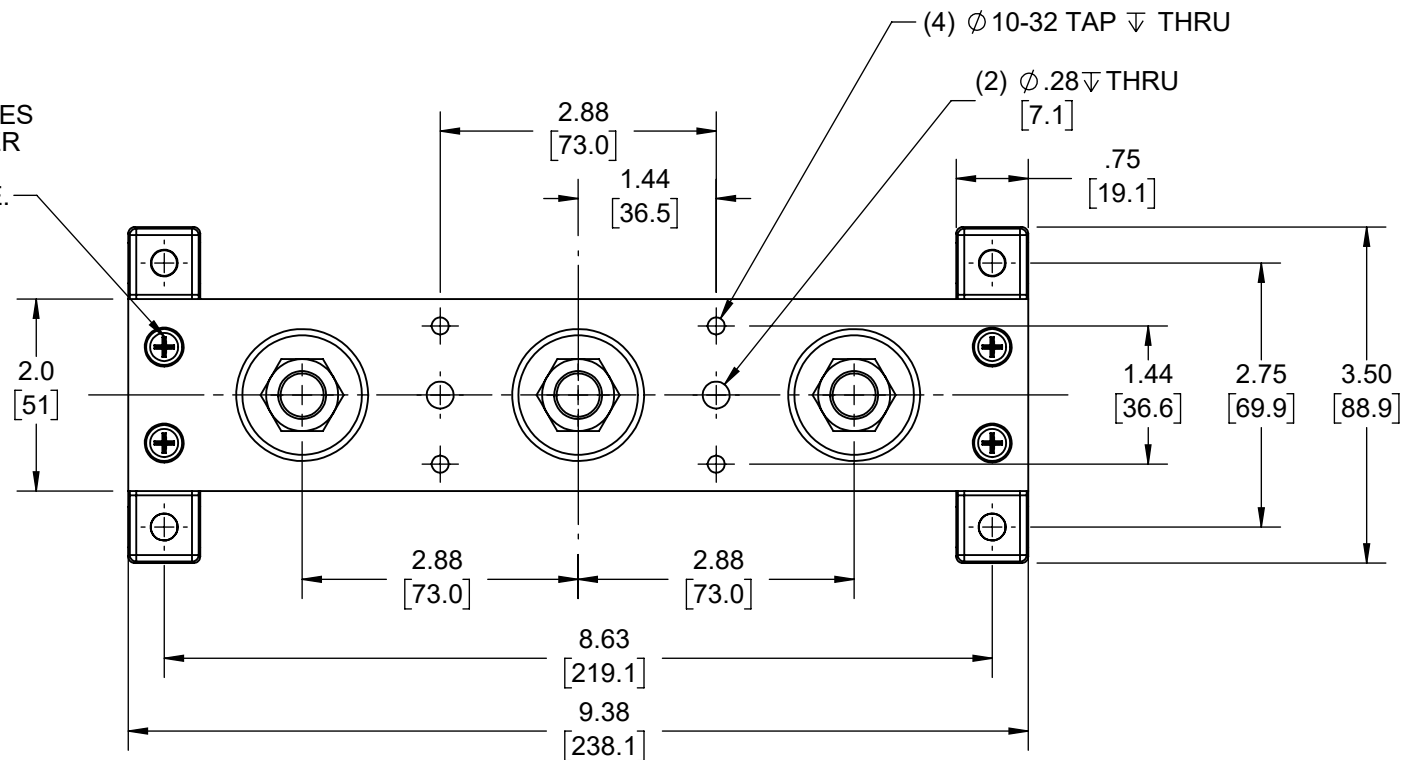


NOTES:

- 1. AGENCY INFORMATION
-UL LISTED FILE: KDER.E247255
- 2. TERMINATION
250 KCMIL MAX
TORQUE: 422 LB-IN
- 3. MATERIAL:
INSULATOR: GLASS FILLED THERMOPLASTIC
BUSBAR: COPPER, TIN PLATE
STUD: STEEL, TIN PLATE
- 4. STANDOFFS SHIPPED UNASSEMBLED
- 5. HARDWARE KITS PROVIDED
-SCREWS
-NUTS
-WASHERS

10-PLX SCREW 4) PLACES
WITH #10 SPLIT WASHER
TORQUE TO 40 LB-IN
DO NOT OVER TORQUE.



DRAWING REVISION B	REVISION BY L. SCHAFFNER	REV DATE/© DATE 04/09/19	TOLERANCES (EXCEPT AS NOTED): DEC. INCH mm ANGLE .X ±0.1 [±3] ±0.5° .XX ±0.01 [±0.3] .XXX ±0.005 [±0.13] .XXXX ±0.0005 [±0.013]	DRAWN BY B. SWANSON		
ECO ECO-0164540	APPROVED BY	DATE	DATE 03/13/15	CATALOG NUMBER 8500072 MODEL-MSP-TERM BLK-HEAVY		
ECO DESCRIPTION CORRECTED STUD DIMENSION - VARIATION NOTICE			REMOVE BURRS & BREAK SHARP EDGES: .003/.015 [.08/.38] X 45° CORNER FILLETS: R.02 [.5] MACHINED SURFACES: 125/3.2 INCH/mm	APPROVED BY	MATERIAL	PROCESS/FINISH
COPYRIGHT (PER REVISION DATE) REGAL BELOIT AMERICA, INC. ALL RIGHTS RESERVED. PROPRIETARY AND CONFIDENTIAL INFORMATION - THIS DOCUMENT IS THE PROPERTY OF REGAL BELOIT AMERICA, INC. ("OWNER") AND CONTAINS OWNER'S PROPRIETARY INFORMATION. ANY PERSON, CORPORATION OR OTHER FIRM RECEIVING IT IS DEEMED, BY RECEIVING IT, TO AGREE THAT IT, AND/OR ANY PART OF IT, SHALL NOT BE DISCLOSED TO ANY PERSON, CORPORATION OR OTHER ENTITY, DUPLICATED, AND/OR USED, EXCEPT AS EXPRESSLY APPROVED IN WRITING IN ADVANCE BY OWNER. THIS DOCUMENT SHALL BE RETURNED TO OWNER UPON REQUEST. IT MAY BE SUBJECT TO CERTAIN RESTRICTIONS UNDER APPLICABLE EXPORT CONTROL LAWS AND REGULATIONS.			mm DIMENSIONS IN [BRACKETS] ARE FOR REFERENCE ONLY	DATE	DRAWING NUMBER 8500072	SHEET 2 OF 2
			REFERENCE S-1895	THIRD ANGLE PROJECTION		