

Power Distribution Block **HVPB114**

Add suffix "CH" for snap-on hinged cover (HVPB114 CH)

Wire Range

- Line and Load: (1) 1/2" Studs
 - Suitable for listed lugs or flexible bus bar
 - Lugs must fit on 1/2" studs, 1.50" (38.1 mm) max width

Electrical Ratings

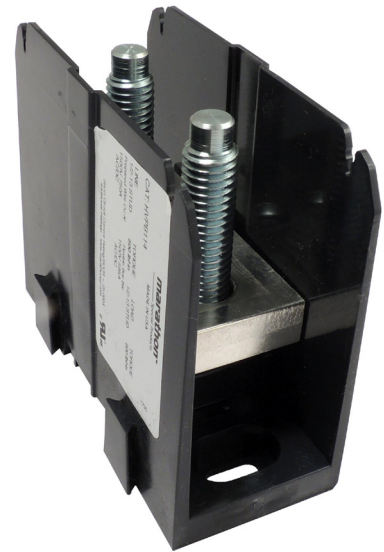
- 750 amps with prepared wire
- 595 amps with flexible bus bar
- Voltage:
 - 1500V per UL 1059 class E & CSA 22.2 No.158, class C requirements
 - 600V per UL 1059 service & industrial class (B, C & E) requirements
 - 600V per CSA 22.2 no.158 service & industrial class C requirements
- Short circuit current rating (SCCR) - see table below
- Factory & field wiring

Agency Compliance

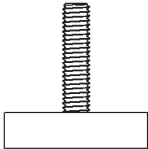
- UR - UL recognized terminal block, evaluated to UL 1059, file no. XCFR2.E62806
- cUR - UL evaluated to CSA 22.2 no.158, file no. XCFR8.E62806

Material Information

- Insulator base:
 - Thermoplastic
 - Flammability rating of insulator base UL94V0
 - Temperature rating: -40°C to 110°C (UL RTI)
- Connector - aluminum, tin plated
- Terminal screws - steel, nickel plated
- Terminal studs - steel, zinc plated
- Hardware - nuts, flat washer, split washer - steel, zinc plated
- RoHS Compliant



Termination Specifications

| Line/Load Side | Termination Type | Torque | Stud Length | Maximum Lug/Bar Width |
|---|---|-------------------------|----------------|-----------------------|
|  | Listed lugs or flexible bus bar on 1/2" studs | 56.4 N·m/ 500 lbf·in | 37.1mm / 1.46" | 39.8mm / 1.55" |

- For use with conductors prepared with Listed connectors such as single hole compression/crimp lugs or listed ring, fork or spade terminals.
- Conductor size, ampacity, temperature rating and type are dictated by the ratings of the listed lugs utilized and applicable code requirements.

Short Circuit Current Ratings (SCCR)

| Suitable Conductor kcmil/AWG or Prepared Flexibar | | Overcurrent Protection Device | SCCR, RMS | Volts, Max |
|---|--------------------------------|-------------------------------|-----------|------------|
| Line | Load | | | |
| ¹ 500 - 2/0 | 500 - 2/0 | no OCPD | 25kA | 480 |
| ² 10 x 32 x 1 to 4 x 32 x 1 | 10 x 32x 1 to 4 x 32 x 1 | no OCPD | 25kA | 480 |
| Listed lugs or Flexible Bus bar on 1/2" studs | | no OCPD | 10kA | 600 |

¹ kcmil/AWG Conductors Prepared with listed Terminals

² Flexibar

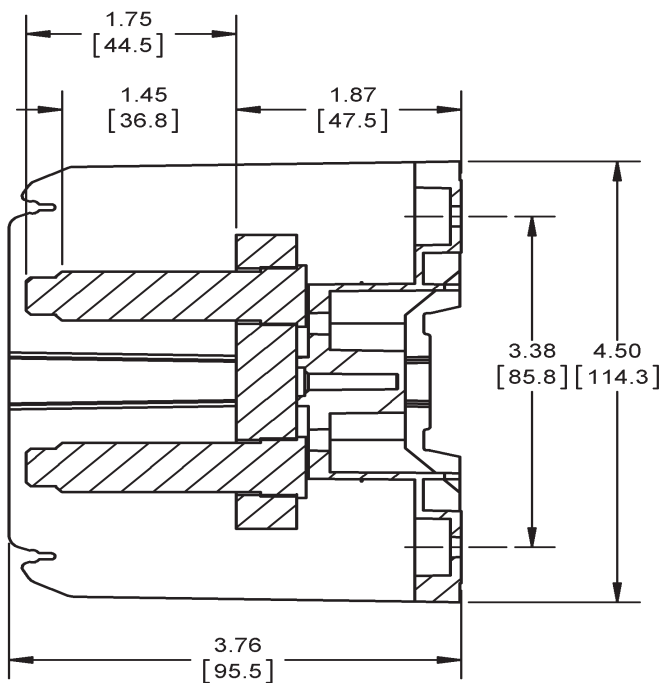
Installation & Accessories

- Mounting (Panel):
 - For use with #10 fastener with flat washer (max diameter 9/16").
 - Mounting torque to be determined in end use application not to exceed 30 lb-in

- Safety Guidelines:
 - Use provided hardware (flat washer, Belleville & nuts).
 - Accessory cover (optional) is not intended to provide insulation for electrical spacings.
 - Stack lugs in decreasing width order. Ensure contact is maintained throughout the connection.

- Covers:
 - Snap-on covers available upon request
 - Catalog Number: CH1332
 - Covers are black polycarbonate

Drawing



SECTION A-A

