

Reinforced Class J Fuse Holder

R6J30AXB

Replace "X" with 1 or 3 for number of poles

Wire Range

- #6 - #14 AWG CU

Electrical Ratings

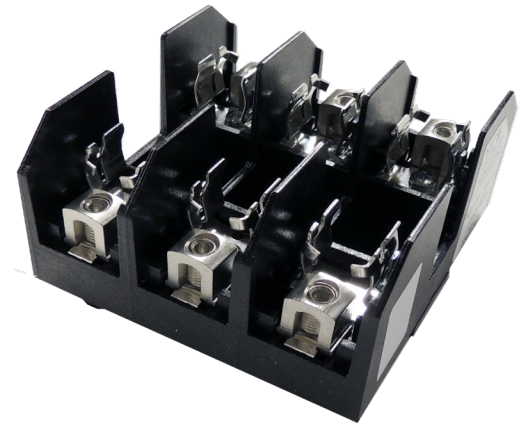
- 0 - 30A Max
 - Amperage rating based on maximum fuse rating for that physical size
- Copper Wire Only
- 600 Volts AC/DC
- Approved for 200,000 Amp Withstand Rating

Agency Compliance

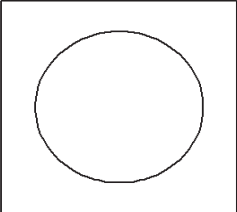
- UL Listed, Fuseholder standards UL 4248-1 and 4248-8
- UL File No. IZLT.E35113
- CSA Certified: 22.2 No 39 - M1987, File No. LR21455
- CE compliant to IEC 60947-1
- RoHS Compliant

Material Information

- Connector: Aluminum, tin plated
- Insulator base:
 - High Impact Thermoplastic
 - Flammability rating of insulator base UL94 V-0
 - Insulator base maximum temperature rating: 125°C (UL RTI)
 - Touch protection: IP-20 (IEC 60529) with optional cover CJ660 (See accessories)
- Use outside these ratings needs to be judged in the end-use application
- Fuse Clip: Copper alloy, tin plated
- Terminal set screws: Steel, tin plated
- Connector mounting screws: Steel, zinc plated



Termination Specifications

Line and Load Side	Wire Size (CU Stranded)	Torque	Wires/ Terminal	Wire Class (UL)
	#6 - #8	25 in. lbs (2.8 N-m)	1	B, C
	#10 - #14	25 in. lbs (2.8 N-m)	1	Solid Cu, B, C

Installation & Accessories

• Mounting (Panel or din):

- For use with #10 fastener
- Wire Strip length - 7/16"
- Mounting torque to be determined in end use application. Not to exceed 20 lbf-in (2.3 N-M)

• Fuse Information:

- Fuses are not supplied by MSP
- Holds fuse size 13/16" diameter x 2 1/4"
- Although any 30A Class J fuses can be used, commonly used J-Class fuses are as follows, but not limited to:
A4J, AJT, JKS, JLS, JTD, JTD_ID, LPJ
- Life cycle status of these noted fuses has not been reviewed, and others are available

• Cover:

- Cover: CJ630. Glass-filled polycarbonate (thermoplastic). 125°C (UL RTI), Flammability rating UL 94 V-0, UL Listed File No. JDVS2.181825.
- Expander Block (R6J30AEB)
- DIN Rail (35 x 7.5mm, 2 m long, slotted) MN35-2

Drawing

