



July 31<sup>st</sup>, 2020

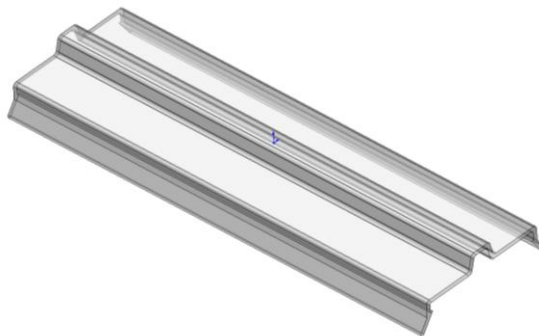
## PRODUCT CHANGE ANNOUNCEMENT

Marathon Special Products is announcing a change in the design of the cover of the 1700 Series Barrier Terminal Block. This product change converts this cover from a plastic extrusion to a molded product that is more efficient to manufacture. The cover will retain the ability to snap on to the associated terminal block, add an alternative marking strip attachment option, as well as match the color of the blocks it accompanies.

The new cover will not be translucent like the old cover. The current SC versions of the 1700 Series that utilize marking strips will need to use the new marking strips that snap onto the covers in order to see the markings w/out removing the cover.

**This will be a running change with no variance to the part numbers or ratings.**

**Old Design**

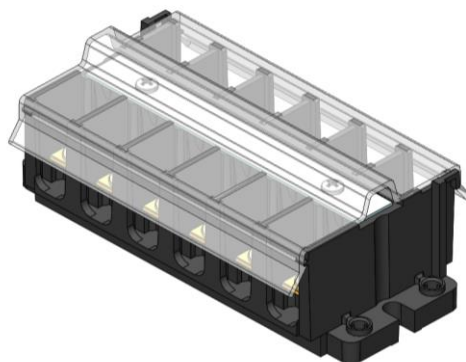


**New Design**



Cover change:

Shown assembled to the standard (STD) version of this product (for reference):



Shown assembled to the short circuit (SC) version of this product (for reference):



Again, this will be a running change with no variance to the part numbers or ratings.

Products will be converted to the new design **in early October 2020**, but will vary depending on when production tooling is in place.

**17XX Series Part Numbers Affected:**

CC1702	CC1703	CC1704	CC1705	CC1706	CC1707
CC1708	CC1709	CC1710	CC1711	CC1712	

Please feel free to email or call with any questions regarding this product modification.

Thank You,

Regards,  
Joe Brown  
Product/Marketing Manager, Marathon Special Products  
Regal Beloit America, Inc  
427 Van Camp Road  
Bowling Green, OH 43402

[JBROWN@MARATHONSP.COM](mailto:JBROWN@MARATHONSP.COM)

Cell: 419.913.7707

Office: 419.373.4240

[www.marathonsp.com](http://www.marathonsp.com)

[www.regalbeloit.com](http://www.regalbeloit.com)

**REGAL**