



PHOTOVOLTAIC FUSE HOLDERS

DESIGNED FOR BUS BAR TERMINATION

PHOTOVOLTAIC FUSE HOLDERS

Regal's Marathon® photovoltaic (PV) fuse holder series is uniquely designed with terminals to accept standard stock bus bar, eliminating the the need for custom fabricated comb bus bars.

SPECIFICATIONS

- Up to 1500V DC
- Up to 800 amps
- UL recognized (UL4248-18)
- CSA certified

FEATURES

- Bus bar terminal clamp
- Bare wire terminal for use with 90°C wire
- 94 V-2 flammability rating
- 130°C (266°F) UL RTI

PV10BW

- 1000V DC
- 30 amps



PV15BW32

- 1500V DC
- 32 amps

MPV SERIES

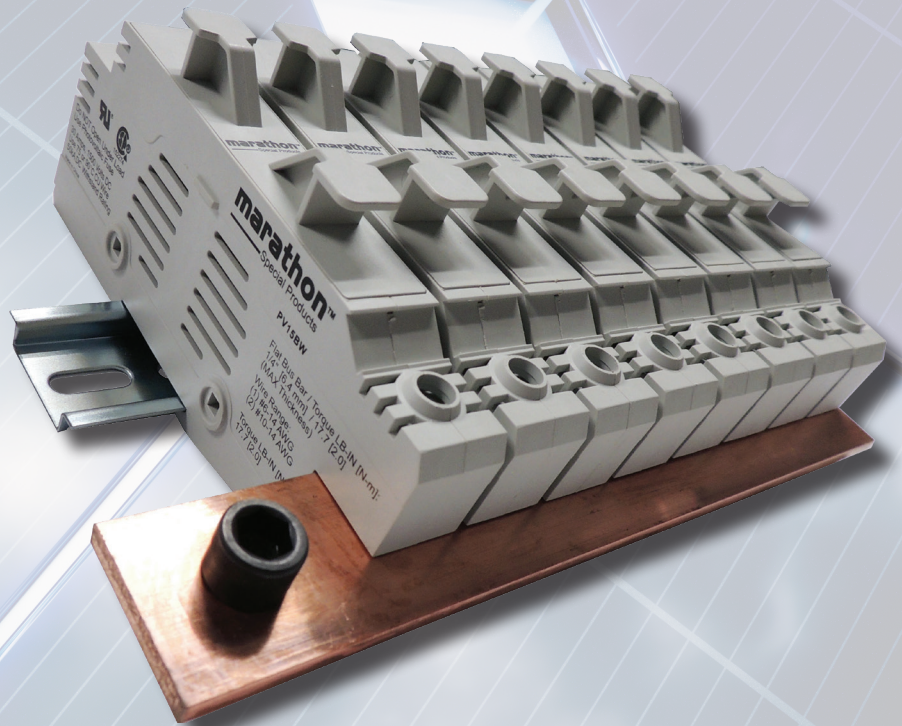
- 1500V DC
- 600 & 800 amps
- Fuse not included



LEAVE THE COMB AT HOME!

SIMPLIFIED DESIGN FOR BUS BAR TERMINATION

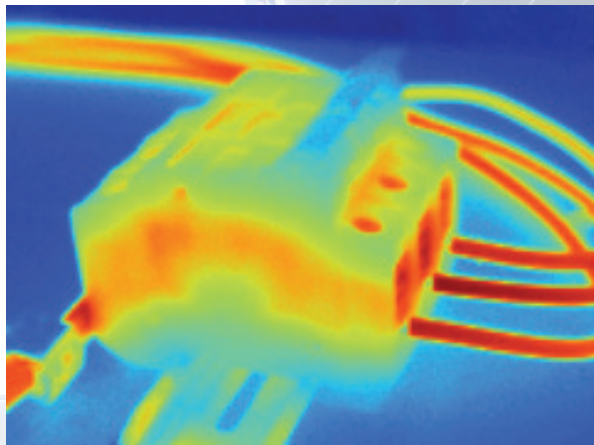
- Eliminates the need for fabricated comb bus bars.
- Easily position, align and move the fuse holder as needed.
- Bus bar terminal encompasses the bar providing additional touch protection.
- Terminal includes an integrated spring plate to ensure clamping force is maintained
- Saves engineering time designing around the "comb"



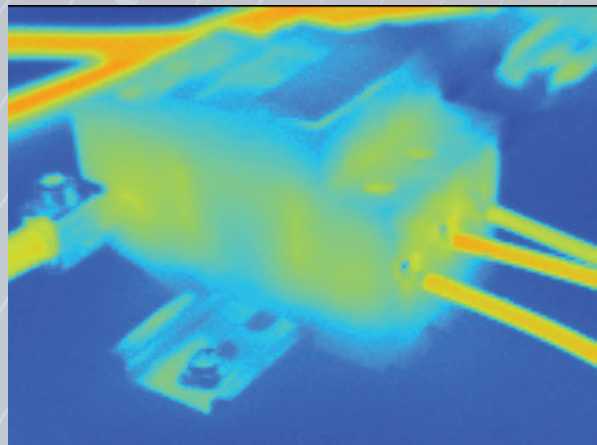
TEMPERATURE REDUCTION

- This series has shown a 16% reduction in temperature over competitive models in high ambient testing.
- The images below show the difference between the heat generated in standard industrial fuse holders and the Marathon® photovoltaic fuse holder. Under identical conditions, ours clearly runs cooler!

Standard Wire Terminal



Marathon® Bus Bar Terminal Clamp



marathon®

Special Products

Regal Beloit America, Inc.

427 Van Camp Road
Bowling Green, OH 43402
Customer Service: 419-352-8441
Fax: 419-352-0875
Technical Service: 419-373-4213

www.marathonsp.com

APPLICATION CONSIDERATIONS

The proper selection and application of power transmission products and components, including the related area of product safety, is the responsibility of the customer. Operating and performance requirements and potential associated issues will vary appreciably depending upon the use and application of such products and components. The scope of the technical and application information included in this publication is necessarily limited. Unusual operating environments and conditions, lubrication requirements, loading supports, and other factors can materially affect the application and operating results of the products and components and the customer should carefully review its requirements. Any technical advice or review furnished by Regal Beloit America, Inc. and/or its affiliates ("Regal") with respect to the use of products and components is given in good faith and without charge, and Regal assumes no obligation or liability for the advice given, or results obtained, all such advice and review being given and accepted at customer's risk.

For a copy of our Standard Terms and Conditions of Sale, please visit <http://www.regalbeloit.com>. These terms and conditions of sale, disclaimers and limitations of liability apply to any person who may buy, acquire or use a Regal product referred to herein, including any person who buys from a licensed distributor of these branded products.

Regal and Marathon are trademarks of Regal Beloit Corporation or one of its affiliated companies.

©2018 Regal Beloit Corporation, All Rights Reserved. MCxxxxE • Form# xxxxE

The REGAL logo consists of the word "REGAL" in a bold, white, sans-serif font, set against a dark gray, trapezoidal background that tapers to the right. A registered trademark symbol (®) is located to the upper right of the logo.